

## 23pc EV/Hybrid Master Tool Kit

Model No.  
SEA HVCOM2

- Contents: SEA AP36MWS, SEA SF500R, SEA PPHY, SEA BYSBKIT, SEA HVG1000VL, SEA HVM17K02, SEA TA320, SEA HVSA4, SEA HYBRIDTAG, SEA HYBRIDSIGN, SEA TBTE08, SEA TBTE09, SEA TBTE04, SEA AK7911, SEA STW803, SEA HRP45, SEA TTS28, SEA TBTE02, SEA TBTE11, SEA TBTE03, SEA TBTE05, SEA TBTE06, SEA TBTE07.
- You may also refer to the individual Model No. for full specification.



## 3000kg Air Operated Coil Spring Compressor

3000kg **AIR Operated**



- Fast and safe compression of suspension coil springs.
- 3000kg Air-operated unit with safety locking guard.
- Adjustable swivel upper arm clamps.
- Supplied with a suspension strut clamp.
- Fits a wide range of left and right-handed coil spring configurations and diameters.

Model No.  
SEA RE3000



*This item is heavy.  
Extra assistance must be  
provided at the delivery  
point to help safe delivery.*

# HAND TOOLS

## 44pc Screwdriver, Hex Key & Bit Set

Siegen

## 44pc Hammer-Thru Screwdriver, Hex Key & Bit Set



Contents: Screwdrivers; Slotted - 3 x 75, 4 x 100, 5 x 100, 6 x 125, 8 x 150mm, Phillips - #0 x 75, #1 x 75, #2 x 100, #3 x 150mm, Pozi - #0 x 75, #1 x 75, #2 x 100, #3 x 150mm, TRX-Star\* - T25 x 100, T27 x 100, T30 x 125, T40 x 125mm, Bit Driver, 1/4" Hex Bits; TRX-Star\* - T7, T8, T9, T10, T15, T20, Hex - 3, 4, 5, 6mm, Hex Keys; Metric - 1.5, 2, 2.5, 3, 4, 5, 5.5, 6mm, Imperial - 1/16", 5/64", 3/32", 1/8", 5/32", 3/16", 7/32", 1/4".



Model No. SEA S01090

Model No. SEA S01106

Model No.	Hammer-Thru
SEA S01090	X
SEA S01106	✓



## Individual 1/2" Sq Drive Deep Impact Sockets

Premier

Deep

Model No. SEA SX006

1/2" Sq Drive



Model No. SEA SX007

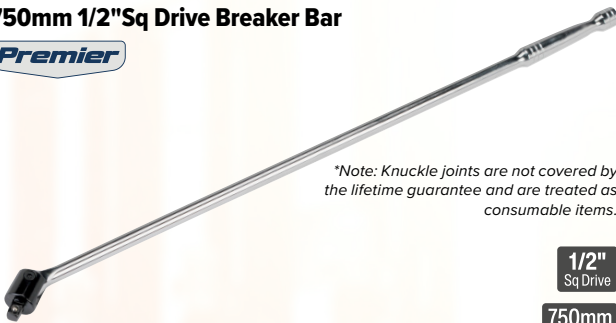
1/2" Sq Drive

- Forged and heat treated Chrome Vanadium steel impact grade bi-hex deep sockets, chemically blackened for corrosion resistance.
- Malleable steel material makes these sockets suitable for use with either hand ratchet wrenches or air impact wrenches.

Model No.	Size	Depth
SEA SX006	36mm	Deep
SEA SX007	41mm	Deep

## 750mm 1/2" Sq Drive Breaker Bar

Premier



\*Note: Knuckle joints are not covered by the lifetime guarantee and are treated as consumable items.

- Hardened and tempered Chrome Vanadium steel bar with high chrome finish.
- Long, slim style handle and spring loaded socket retention.
- Fully replaceable knuckle joint\*.

1/2" Sq Drive  
750mm Length

Model No. SEA AK7302

## 1/2" Sq Drive Knuckle for AK730 & AK7302

Premier

1/2" Sq Drive



- Knuckle joint for Model No's SEA AK730 and SEA AK7302 1/2" Sq Drive Breaker Bars.

Model No. SEA AK730/RK

## 3pc Power Tool Socket Adaptor Set

Premier

1/4", 3/8" & 1/2" Sq Drive



- Manufactured from hardened and tempered Chrome Vanadium steel with 1/4" hexagon shanks.
- Ideal for use with all electric/air drills.
- Suitable for repetitive applications which require 1/4", 3/8" or 1/2" Sq drive sockets.
- Features spring-ball socket retainers.

Model No. SEA AK4929

## 10pc Pipe Flaring & Cutting Kit



### Adaptor 3/16"



Spare Part  
Model No. SEA AK506.V2-03

- Tubing kit suitable for cutting and flaring copper, brass or thin walled aluminium pipe.
- Includes screw-type tube cutter with die-cast frame and integral deburring tool.
- Dies: 3/16", 1/4", 5/16", 3/8", 7/16", 1/2", 5/8".

Model No. SEA AK506

## 100W Soldering Iron

100W



- Class 1 electrically insulated soldering iron with cool grip handle which stays comfortable during prolonged use.
- Fitted with replaceable soldering tip.
- Includes 1.5m cable with 3-pin plug.
- Complies with Low Voltage Directive and Electromagnetic Compatibility Directives.

Model No. SEA SD100

## 42pc 3/8" & 1/2" Sq Drive TRX-Star\*/Hex/Spline Bit Set

Premier

3/8" & 1/2" Sq Drive



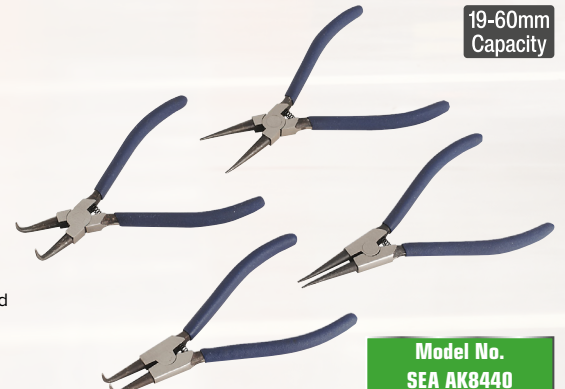
- Contents: TRX-Star\* Bits; T20, T25, T30, T40, T45, T50, T55, T60 (1 each 30 and 75mm), Hex Bits; 4, 5, 6, 7, 8, 10, 12mm (1 each 30 and 75mm), Spline Bits; M5, M6, M8, M10, M12 (1 each 30 and 75mm), Drive Adaptors; 3/8" Sq x 10mm Hex, 1/2" Sq x 10mm Hex.

Model No. SEA AK219

## 4pc Circlip Pliers Set

19-60mm Capacity

- Spring loaded jaw sets manufactured from hardened and tempered steel.
- Internal and external, in both straight and bent configuration.
- Pliers are fully polished and fitted with non-slip polyfoam grips.
- Min./Max. Circlip Capacity: 19-60mm.



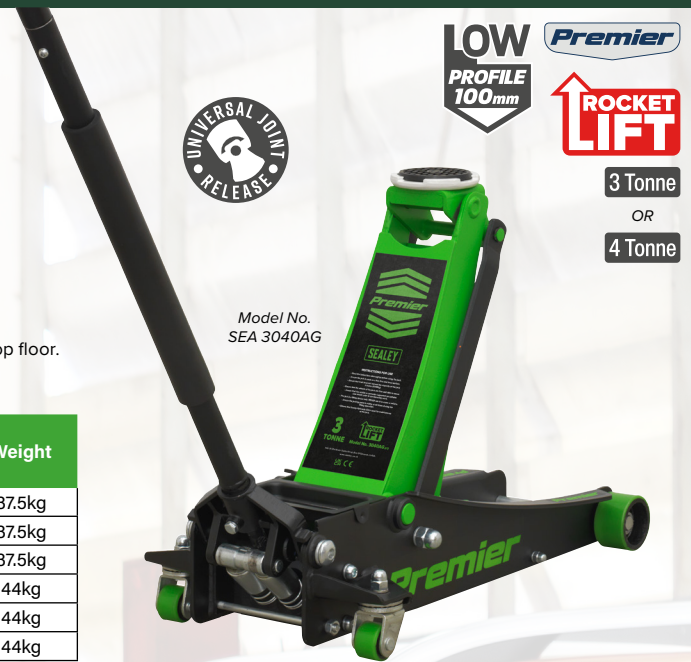
Model No. SEA AK8440

## Premier Low Profile Trolley Jacks with Rocket Lift



- Heavy base design and large jacking saddle for increased load stability.
- Universal joint release mechanism allows safer, more controlled lowering of the jack.
- Rocket Lift feature brings lifting arm into contact with jacking point with minimal pumps.
- Polyurethane wheels for smoother manoeuvrability and helps prevent damage to workshop floor.
- Magnetic wheel nut retention tray.
- Protective jack handle sleeve helps prevent accidental damage to car bodywork.

Model No.	Colour	Capacity	Min./Max. Saddle Height	Max. Chassis Height	Length	Weight
SEA 3040AG	Green	3 Tonne	100/533mm	162mm	740mm	37.5kg
SEA 3040AO	Orange	3 Tonne	100/533mm	162mm	740mm	37.5kg
SEA 3040AY	Yellow	3 Tonne	100/533mm	162mm	740mm	37.5kg
SEA 4040AG	Green	4 Tonne	100/533mm	162mm	751mm	44kg
SEA 4040AO	Orange	4 Tonne	100/533mm	162mm	751mm	44kg
SEA 4040AY	Yellow	4 Tonne	100/533mm	162mm	751mm	44kg



Model No. SEA 3040AG

**LOW PROFILE 100mm** Premier  
**ROCKET LIFT**  
3 Tonne  
OR  
4 Tonne

## 2 Tonne Short Chassis Trolley Jack

2 Tonne



- Min./Max. Saddle Height: 130/330mm.
- Chassis Length: 450mm.
- Steel chassis with welded castor supports and one-piece hydraulic unit.
- Fitted with overload valve and finger cover for extra safety.
- Suitable for the hobby user or as an emergency mobile jack.
- Includes one-piece pumping handle and carry handle.

Model No. SEA 1050CX

## 3 Tonne Trolley Jack

3 Tonne



- Min./Max. Saddle Height: 130/520mm.
- Chassis Length: 659mm.
- Integral cog-type release mechanism and long 2-piece handle.
- Heavy-duty swivel castors and extra-large saddle design ease positioning under vehicle.
- Fitted with safety overload valve and pump-through valve to prevent handle locking once at maximum lift height.

Model No. SEA 3000CXD

## 3 Tonne Standard Chassis Trolley Jack with Axle Stands (Pair)

3 Tonne



- Jack Min./Max. Saddle Height: 130/520mm.
- Single-piece hydraulic unit with heavy chassis design.
- Integral American cog-type release mechanism and long 2-piece handle.
- Heavy-duty castors and large saddle design ease positioning under vehicle.
- Fitted with safety overload valve and pump-through valve to prevent handle locking at maximum ram extension.
- Ideal for loaded vans up to 3.5 Tonne GVW.
- Supplied with Pin Type Axle Stands, 3 Tonne (3000kg) capacity per stand, 6 Tonne (6000kg) per pair.
- Axle Stand Min./Max. Working Height: 290/435mm.

Model No. SEA 3010CX

## 1.5 Tonne Heavy-Duty Scissor Jack

1.5 Tonne



- Simple and effective design makes it a perfect tool for emergency lifting of a vehicle for maintenance, repairs and tyre changing.
- Easily stored and transported within your vehicle, ready for when needed.
- Fine rolled thread and precision made thrust bearing for long life and smooth operation.
- The pivoted crank handle allows for low ground clearance, is long enough to clear the vehicles bodywork and is easy to store with the jack.
- A hardened steel frame and a wide base ensure a solid and stable lift.
- Min./Max. Height: 100/375mm.

Model No. SEA 58M

# JACKING & LIFTING/BATTERY CHARGERS & STARTERS

## Axle Stands (Pair) 3 Tonne Capacity per Stand

3 Tonne

**HEAVY DUTY**

- Heavy-duty axle stands to safely support vehicles for extended periods of time.
- Large crutches for good load distribution.
- The heavy gauge steel frame and welded construction gives superior strength and safety.
- All stands feature captive, multi-position pin load support.
- Sold in pairs.



Model No.	Colour	Capacity Each	Capacity Pair	Min./Max. Working Height
SEA AS30	Orange	3 Tonne	6 Tonne	290/435mm
SEA AS3Y	Yellow	3 Tonne	6 Tonne	290/435mm

## Car Ramps 1.5 Tonne Capacity per Ramp 3 Tonne Capacity per Pair

3000kg

- Manufactured from durable polypropylene.
- Overall Dimensions (L x W x H): 900 x 300 x 215mm.
- Maximum Tyre Width: 260mm.



Model No.  
SEA CAR3000C

## Car Ramps Low Profile 1.5 Tonne Capacity per Ramp 3 Tonne Capacity per Pair

3000kg

Low Profile

- Made from durable polypropylene.
- These ramps are designed to allow jacking access to suitable jacking points on the vehicle.
- Not intended to raise a vehicle enough for under vehicle servicing.
- Overall Dimensions (L x W x H): 700 x 200 x 80mm.



Model No.  
SEA CAR3000LR

## 1 Tonne Folding Engine Crane

1 Tonne

Self Assemble



Fast folding design.



- Lifts 1000kg at 830mm jib extension.
- Heavy-duty castors.
- Weighs only 67kg.
- Side pump access with removable handle.
- Delivered in knock-down form.
- Some self-assembly required.

Model No.  
SEA SC10

## 1600A 12V RoadStart® Emergency Jump Starter

1600 Peak Amps

12V



- Cable and clamp Length: 1m.
- Produces in excess of 1600 Peak Amps.
- Suitable for starting vehicles with 6-cylinder petrol engines up to 3.5L and 4-cylinder diesel engines up to 3L.
- Composite case with integral battery clip storage and carry handle.
- LED Battery condition and charge indicators.
- Fitted with 12V power socket that will accept any 12V device with a vehicle accessory socket plug.
- Supplied with mains charger.

Model No.  
SEA RS102

## 1200/600A 12/24V Jump Starter Power Pack Lithium-ion Phosphate (LiFePo4)

12V/24V

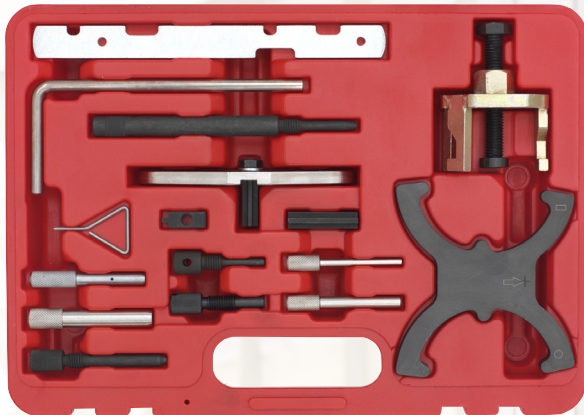
32000mAh



- Compact and lightweight 12/24V jump starter pack.
- Capable of starting all 12V vehicles and up to 400-450HP, 12V; 5L Petrol/3.5L Diesel, 24V; 3L.
- Fitted with two USB outlets (5V=1A and 5V=2A) and 12V port.
- Battery can supply up to 10 full charges for smartphones and MP3 players.
- Integral worklight for use at night.
- Battery Capacity: 32000mAh @ 3.2V, 8000mAh @ 12.8V, 4000mAh @ 24V.
- Starting Current: 12V - 600A, 24V - 300A.
- Size (W x D x H): 292 x 79 x 233mm.

Model No.  
SEA SL32S

## Diesel/Petrol Engine Timing Tool Combination Kit for Ford, PSA - Belt/Chain Drive



- Suitable for a wide range of belt or chain driven petrol and diesel engines.
- Contains a camshaft sprocket puller and flywheel locking tools.
- Supplied in a storage case with instructions and a warning tag.

**Model No.**  
**SEA VSE5042A**

## Diesel Engine Timing Tool Kit - VAG, Ford, Dodge, Mitsubishi 1.2D/1.4D/1.6D/1.9D/2.0D TDi Common Rail Belt Drive



- For VAG 1.4D, 1.9D, 2.0D TDi PD (Pumpe Duse) and 1.2D, 1.6D, 1.9D, 2.0D CR (Common Rail) engines with Mechanical (Friction Dampened) Belt Tensioner.
- Kit includes crankshaft locking tools (oval and round gears), plus camshaft and tensioner locking pins.

**Model No.**  
**SEA VSE2358**

## Petrol Engine Belt Replacement & Chain in Head Service Set VAG 1.8/1.8T - Belt Drive



- Suitable for belt tensioning 1.8 and 1.8 Turbo twin camshaft engines.
- These belt drive engines also have a chain connecting the two camshafts.
- Includes a belt tensioner bolt, belt tensioner pin and chain tensioner retainer.

**Model No.**  
**SEA VSE5909**

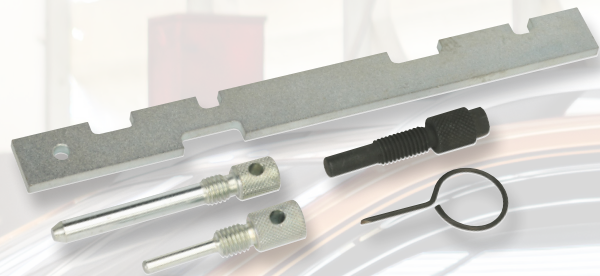
## Diesel Engine Timing Tool Kit - for Dacia dCi, Nissan 1.5dCi, Renault, Suzuki DDiS Belt Drive



- Essential Tools for timing belt replacement on Renault/Nissan 1.5D dCi diesels.
- Covers engine codes K9K.
- These engines are also fitted in Suzuki and Dacia models.

**Model No.**  
**SEA VSE1901A**

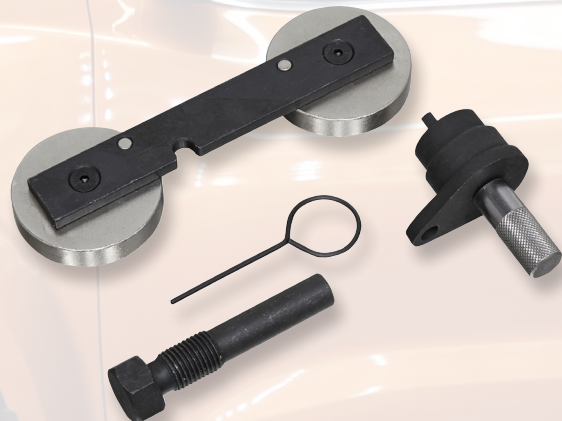
## Petrol Engine Timing Tool Kit - for Ford, Mazda, Volvo 1.25/1.4/1.6/1.8/2.0/2.3 16v Duratec - Belt/Chain Drive



- Covers the complete range of Ford Duratec engines 1.25, 1.4, 1.6, 1.8, 2.0, 2.3 16v in both belt and chain drive variants.

**Model No.**  
**SEA VSE5515**

## Petrol Engine Timing Tool Kit - VAG 1.2/1.4 TFSi, 1.4/1.6 FSi Chain Drive



- Timing kit suitable for 1.2, 1.4 TFSi and 1.4, 1.6 FSi engines.
- Kit contains essential tools for crank TDC positioning, camshaft setting and tensioner locking.
- Supplied in storage case.

**Model No.**  
**SEA VSE5950**

## Camshaft Positioning Tool



- Adjustable legs allow insertion of pegs into holes in camshaft pulleys.
- Suitable for coarse and fine positioning of camshaft for timing on a variety of engines including Ford Zeta and Zetec engines.
- Legs open up to 126mm.
- Comfortable screwdriver type grip.

**Model No.**  
**SEA VS173**

# VEHICLE SERVICE TOOLS

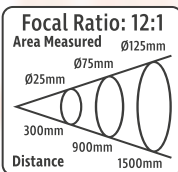
## Diesel & Petrol Compression, Leakage & TDC Kit



- A comprehensive kit for testing the compression and leakage on both diesel and petrol vehicles.
- Features 600psi gauge with large rubber bumper, straight and right angled quick connect fittings and an extensive range of spark/glow plug and injector adaptors.
- Includes TDC finder, ideal for use when the engine has no crankshaft timing marks.
- See Sealey website for complete vehicle applications.

**Model No.**  
**SEA VSE3156**

## Infrared Laser Digital Thermometer 12:1



- Detects energy emission in the infrared spectrum and converts reading into a display of temperature.
- Features laser pointer, data-hold and auto-power-off.
- Temperature is displayed on a large 23mm LCD HD colour screen with back-lit display for use in low light areas.
- Temperature can be shown in either °C or °F.
- Temperature Range: -50°C to +530°C (-58°F to +986°F).
- Powered by 2 x AAA batteries (not included).

**Model No.**  
**SEA VS904**

## 8pc Petrol Engine Compression Test Kit



- Compression tester fitted with Ø63mm gauge reading up to 300psi(20kg/cm<sup>2</sup>).
- Kit includes 130mm straight and angled push-on connectors, 300mm flexible extension with 10, 12, 14, 18mm deep thread adaptors.

**Model No.**  
**SEA CT955**

## Fuel Feed Pipe Pliers



- Suitable for releasing connections on fuel pipes during maintenance or when replacing fuel filters.
- Designed to compress the quick connect lugs for easy removal without damaging the connector.

**Model No.**  
**SEA VS0453**

## Mini Digital Thermometer



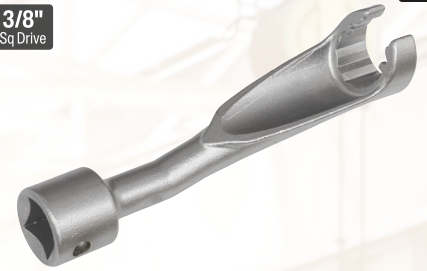
- High precision digital thermometer with the sensor located in the tip of the stainless steel probe.
- Compact and lightweight, measuring both °C and °F with hold function.
- Temperature Range: -40°C to +250°C (-40°F to +482°F).
- Ideal for testing automotive air conditioning output.
- Powered by 1.5V battery (supplied).

**Model No.**  
**SEA VS906**

## 17mm Multi-point 3/8" Sq Drive Fuel Pipe Socket



**3/8"**  
**Sq Drive**



- Manufactured from Chrome Vanadium.
- Suitable for removing and installing high pressure fuel pipes.

**Model No.**  
**SEA AK6900**

## Fuel Filter Key - VW, Volvo 2.0/2.4D/2.5TDi



**1/2"**  
**Sq Drive**



- For removing and refitting the fuel filter cap when replacing the fuel cartridge on diesel 2.0D, 2.4D, 2.5TDi engines found in VW and Volvo vehicles.

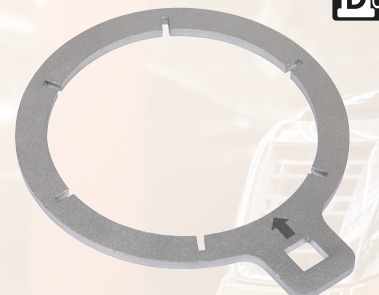
**Model No.**  
**SEA VS6427**

## Fuel Filter Key - Ford Transit



**1/2"**  
**Sq Drive**

**FORD**



- For removing and refitting fuel filter bowl when replacing the fuel cartridge.

**Model No.**  
**SEA VS6428**

## Air Conditioning & Fuel Line Disconnection Set



- Automotive fuel line and air conditioning hose disconnection set.
- Suitable for a wide variety of vehicles with quick disconnect couplings.
- Compatible with low profile fuel lines on a range of Ford, Vauxhall/Opel, Mazda and Chrysler.
- Designed for automotive fuel, A/C and transmission cooler lines.
- Made from a tough durable plastic that is resistant to fuel and solvents.
- Offset handles are ideal to access fittings in tight spaces.

**Model No.**  
**SEA VS0555**

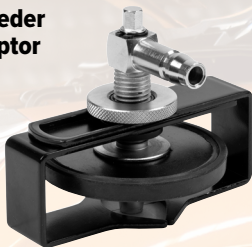
## Vacuum & Pressure Test/Bleeding Kit



- Professional vacuum/pressure diagnostic tool helps identify a variety of faults on vehicle systems including fuel, ignition, transmission, emission and air conditioning/heating.
- Kit also includes reservoirs, hoses and adaptors for bleeding brake and clutch systems.
- Features simple push/pull function for choice of pressure or vacuum testing.
- Large rubber easy-to-read gauge.

**Model No.**  
**SEA VS403**

## Brake & Clutch Bleeder Cap Universal Adaptor



- Universal brake and clutch bleeder adaptor cap fits most vehicles.
- 90° Rotating coupling with height adjustment for use where space is limited.
- Adjustable securing wings connect to the master cylinder filling neck 114–180mm.
- Brake fluid resistant EPDM rubber. Cap size Ø26–79mm.
- Heavy-duty chrome steel construction.

**Model No.**  
**SEA VS0204UA**

## Vacuum Tester & Brake Bleeding Kit



- Multifunction diagnostic tool used to test a variety of essential engine and associated functions.
- Also includes reservoir, hoses and adaptors for bleeding brake and clutch systems.
- Brass-bodied vacuum pump with easy-to-read vacuum gauge.
- Contents: Vacuum Pump, Fluid Container, Transfer Cap, Vacuum Hoses; 560mm (x2), 80mm (x4), Assorted Vacuum Hose Fittings (x5), Bleed Nipple Adaptors (x3).

**Model No.**  
**SEA VS402**

## Vacuum & Fuel Pump Pressure Test Gauge Set



- Ø80mm Gauge with protective rubber bumper and hanging hook.
- Checks for leaks in fuel line, vacuum chokes and heating.
- Includes long flexible hose and adaptors.

**Model No.**  
**SEA VSE952**

## Turbo System Leakage Tester



- Designed to charge the turbo system with a low pressure of regulated workshop air to show the presence of leaks within the system.
- Kit supplied with four pairs of stepped adaptors to fit most sizes of hose.
- Adaptor Sizes: 35-90mm.
- Features a pressure gauge, shut-off valve and pressure release valve.
- Can also be used on cooling system hoses.
- Supplied in storage case.

**Model No.**  
**SEA VS2030**

## Smoke Diagnostic Tool Leak Detector EVAP



- Allows the technician to pinpoint all manner of system leaks including the air intake, cooling, evaporation, fuel, exhaust and vacuum systems.
- Fast and simple-to-use, maximising earning potential.
- System is clean and quick to use and connects to a 12V vehicle battery.
- Features EVAP and smoke mode with flow control valve.
- Supplied with cone adaptor, power cord clamp, valve core wrench, test oil refill bottle, smoke hose, EVAP connector, universal airbag adaptor, blanking rubber cones.
- Rubber cone sizes: Ø5-10, 9-15, 14-19, 18-26, 25-35, 32-45, 45-60, 60-75mm.
- Mineral oil not included.

**Model No.**  
**SEA VS869**

## Ø3.9mm Camera Video Borescope



- High performance pistol grip borescope with 85mm colour TFT screen and waterproof probe pod with IP67 rating.
- Features video record/playback, still images and stream live video via the AV out connection.
- Videos and images are stored on a 4GB micro SD card (supplied) allowing up to 4.5 hours of video and 10,000 images, which can be transferred to a PC via the USB connection.
- Also features digital zoom control and rotate/flip control of image.
- Powered by lithium-ion battery pack giving up to 4 hours continuous use.
- AV and USB cables supplied.

**Model No.**  
**SEA VS8232**

## Ø6mm Video Borescope Articulated



- Portable articulated borescope supplied with 70mm TFT colour display.
- Mini waterproof (IP67) camera with integral light (Ø6mm) mounted on 800mm flexible 2-way articulated probe.
- Using an attached dial, the camera head angle can be changed by up to 350° without having to remove camera from inspection area.
- Using 8GB micro SD card (supplied), up to 9hrs of video and 20,000 still images can be recorded.
- Videos and still images can be downloaded to a PC via USB data cable (supplied).
- CMOS camera with six LED probe light and a focus distance of 20-50mm for fine control of light output and clear pictures.
- Potential applications; automobile maintenance, engine inspection, pipe line exploration etc.
- Powered by 4 x AA batteries (not included).

**Model No.**  
**SEA VS8233A**

## Digital Automotive Analyser/Insulation Tester - Hybrid/Electric Vehicles



- Specially designed for hybrid vehicles and conforms to EN61010 CAT III (1000V) and CAT IV (600V).
- Unlike other multimeters this unit has an insulation test function that allows testing of the insulation of the high voltage cables and motor generator units found on hybrid vehicles.
- Can be used as a stand-alone device or linked wirelessly with a USB interface to a PC or laptop enabling results to be graphed, saved or printed.
- Supplied with high voltage probes, thermocouple soft storage bag and wireless USB cable.
- The unit also has the usual functions expected on a high quality multimeter including true RMS (Root-Mean-Square) and IP67 waterproof rating.

**Model No.**  
**SEA TA320**

## In-Line Ignition/HT Spark Tester



- Tests HT supply to spark plug.
- Quick and simple fault diagnosis.

**Model No.**  
**SEA VS526**

## Jumper Test Lead Set 450mm x 5 Pairs



- Five pairs of coloured cables.
- Each cable has shrouded crocodile clips at each end.
- Use as extensions to multimeter leads, to bridge suspected open-circuit cables and as temporary wiring.

**Model No.**  
**SEA VS222**

## 8-Function Digital Multimeter with Thermocouple



- Heavy-duty general-purpose multimeter with clear and easy-to-read LCD display.
- Features data-hold function, temperature probe and diode test facility.
- Housed in rugged rubber boot with integral stand.
- Supplied with full set of leads and probes.
- Measures: AC and DC Voltage, DC Current, Resistance, Temperature, Audible Continuity, Diode/Transistor Verification Mode.

**Model No.**  
**SEA MM20**

## 6-24V Circuit Tester

**6V to 24V**



- Suitable for 6-24V DC circuits.
- Knurled brass body with test light.
- Probe tip is covered with protective brass screw cap.
- Tester illuminates when voltage is present.
- Supplied with cable and alligator earth clip.

**Model No.**  
**SEA AK4008**

## 6-24V Auto Probe with 4.8m Cable

**6V to 24V**

**4.8m**



- Fitted with 4.8m cable allowing access to the rear of the vehicle.
- Just some of the tests, which can be done quickly and efficiently on systems from 6V up to 24V:
  - Cooling fan motors
  - Fuel pumps
  - Window/Sunroof motors
  - Relays and Lamps
  - Wiper motors

**Model No.**  
**SEA PP1**

## 8-Function Professional Auto-Ranging Digital Multimeter



- High precision auto-ranging multimeter.
- Conforms to EN 61010-1 CAT III 600V safety requirements for electrical equipment for measurement, control and laboratory use.
- Temperature measurement capability, max./data-hold and auto-power-off function.
- Double moulded housing with soft grip case and large display for ease of use.
- Probe and lead storage and integral upright stand for use on the workbench.
- Supplied in zipped pouch with carry strap.

**Model No.**  
**SEA TM102**

## 6/12/24V Circuit Tester with Test Light

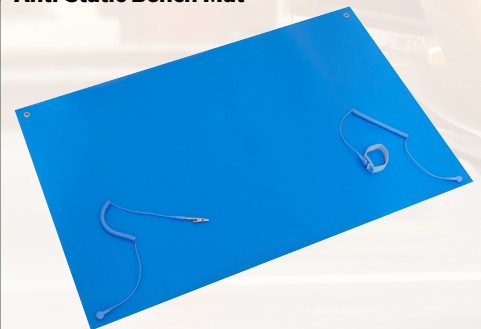
**6V  
12V  
24V**



- Suitable for testing 6, 12 and 24V DC circuitry.
- Insulated, pointed probe tests through wire insulation.
- Supplied with 1.5m cable and crocodile earth clamp.

**Model No.**  
**SEA AK402**

## Anti-Static Bench Mat



- For use when working on sensitive electronics without causing damage through electrostatic discharge.
- Large working surface – 900 x 600mm.
- Durable 2mm PVC which is chemical, oil and abrasion resistant.
- Four 10mm press stud connectors, suitable for left and right-handed use.
- Earthed wrist strap and crocodile clip with two 1.7m coiled earth leads included.

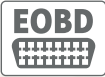
**Model No.**  
**SEA TA600**



## Diagnostic Socket Memory Safe - EOBD

12V

Surge Protected



- Attaches to a 12V slave battery and provides power via the EOBD socket to on-board electronics whilst vehicle's own battery is disconnected.
- Features LED to indicate back-up battery power supply status.
- Saves valuable time spent re-programming lost codes.

Model No.  
SEA VS2072

## Technician's Stethoscope



- Quickly locates the source of engine noise such as piston slap, worn gears and bearings, damaged valves, water pump failure and blown gaskets and even dashboard squeaks.
- Plastic ear pieces and 300mm probe with sound amplifying chamber.

Model No.  
SEA AK871

## 6-42V Open & Short DC Circuit Detector

6V to 42V



- Find short and open circuits quickly and easily.
- Simply attach the sender unit to the circuit and follow the wires using the detector.
- Ideal for automotive repairs.
- Suitable for all DC circuits up to 42V.
- Supplied in storage case.
- Powered by two 9V batteries.

Model No.  
SEA FF400

## 6/12/24V Battery Fluid Tester Dial Type

6V  
12V  
24V



Model No.  
SEA AK410

- Tests 6, 12 and 24V batteries.
- Composite body and rubber bulb for workshop durability.

## 6/12/24V Battery Fluid Tester - Tube Type

6V  
12V  
24V



Model No.  
SEA AK414

- Professional battery hydrometer.
- Tests 6, 12 and 24V batteries.
- Float gauge and thermometer built-in.
- Tube construction with thermometer for temperature compensation.

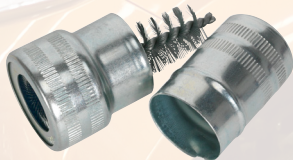
## Battery Terminal Spreader & Cleaner Tool

- Removes heavy corrosion for improved electrical contact on battery terminals.
- Unique design makes spreading the battery terminal clamp easy, for quick installation.
- Ergonomic handle with a comfortable non-slip grip.
- Fits most battery clamps with min./max. 15-20mm clamp opening.



Model No.  
SEA AK423

## Battery Post & Terminal Cleaner



- Wire brushes remove corrosion build-up on battery posts and terminals for improved electrical contact.

Model No.  
SEA AK417

## 4-Way Battery Post & Terminal Cleaner

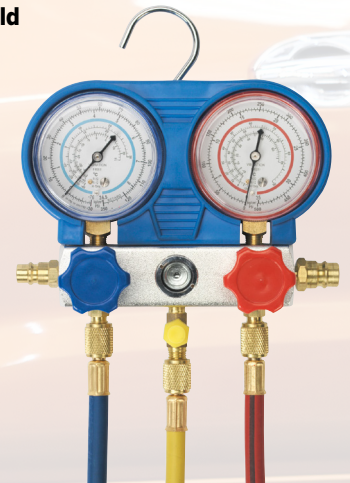


- Removes heavy corrosion build-up on battery posts and terminals for improved electrical contact.
- Features clamp reamer and terminal scrapers.

Model No.  
SEA AK418

## Air Conditioning System Manifold with Sight Glass

- Designed for refrigerant testing, charging and evacuation.
- Can be used on automotive, commercial and domestic A/C and domestic refrigeration systems.
- Gauges marked for R134a and R12 pressure reading.
- Colour-coding on gauges, valves and hoses for easy operation.
- Features 2-way manifold and sight glass for monitoring refrigerant flow.
- Quick couplings included and hanging hook.



Model No.  
SEA VSAC002

## 12V Digital Battery & Alternator Tester

12V

Battery & Alternator



- Compact device which accurately tests battery, cranking and alternator.
- No heat, no sparks and no misdiagnosis.
- Just key in the battery rating from the top of the battery and results are displayed on LCD screen.
- Includes a facility to print results via PC.
- No internal battery and will test batteries with a residual charge of just 8V.
- Supplied with PC software and instruction manual in storage pouch.

Model No.  
SEA BT105

## 6/12V Battery Drop Tester

6V/12V



- American-style drop tester.
- Load applied by internal switchgear - no sparking.
- Suitable for 6 and 12V batteries.
- Applies load across cells and measures output on meter.
- Accurate indication of battery voltage and faulty or short circuited cell.

Model No.  
SEA BT91/7

## 33pc Glow Plug Thread Repair Set



- Fast and effective remedy for damage to cylinder head glow plug threads.
- Set includes tools for the precise insertion of threaded inserts into the head and features a unique tap guide system to ensure their correct alignment.
- Includes four sizes of threaded adaptors suitable for common sizes of glow plug.



Model No. SEA VS311.01



Model No. SEA VS311.02



Model No. SEA VS311.03



Model No. SEA VS311.04

Spare Part Model No.	Description
SEA VS311.01	M8 x 1mm Thread Insert for SEA VS311 - Pack of 5
SEA VS311.02	M10 x 1mm Thread Insert for SEA VS311 - Pack of 5
SEA VS311.03	M10 x 1.25mm Thread Insert for SEA VS311 - Pack of 5
SEA VS311.04	M12 x 1.25mm Thread Insert for SEA VS311 - Pack of 5

Model No.  
SEA VS311

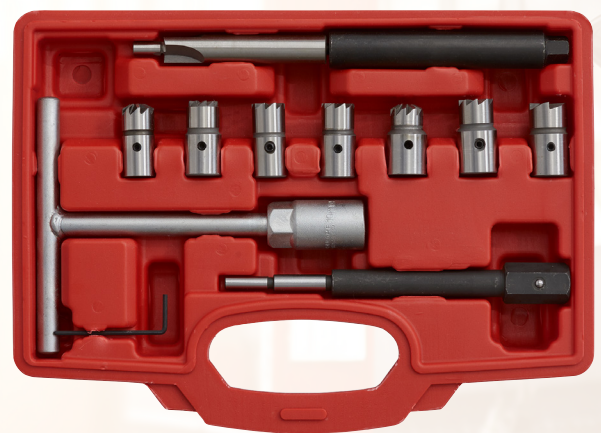
## 14pc Injector Bore Cleaning Brush Set



- Ideal for cleaning and decarbonising areas with limited access, especially injector apertures before refitting.
- Set includes:
  - 3-Piece Brass Brushes; Ø18, 20, 25mm,
  - 2-Piece End Brushes; 15 x 19mm,
  - Extension Bar (x1),
  - 1-Piece Steel Rod,
  - 6-Piece Blanking Plugs.

Model No.  
SEA VS1900

## 10pc Diesel Injector Seat Cleaner Set



- Set of seven diesel injector seat cleaners, ream, centring pilot and T-handle.
- Used to clean/decarbonise injector seats when changing injectors.
- Helps to avoid blow-back due to poorly seated injectors.
- Suitable for a wide range of vehicles.

Model No.  
SEA VS2055

## 300mm Spark Plug Pliers



- Suitable for removal of spark plug boot on deep-seated engine applications.
- Composite handles provide insulation from HT shock and give added comfort and control.

Model No.  
SEA VS867

## 16mm 3/8" Sq Drive Spark Plug Socket - Magnetic

3/8" Sq Drive

Magnetic

6



- Magnetic spark plug socket.
- Forged Chrome Vanadium steel, hardened, tempered and chrome plated.

Model No.  
SEA AK654

## 2pc Injector Bore Cleaning Brush Set

- Ideal for cleaning and decarbonising areas with limited access, especially injector apertures before refitting.
- Brush Sizes: Ø10-34.5mm, Ø15mm.
- Brush Type: Steel.
- Overall Length: 260mm, 275mm.



Model No.  
SEA VS1920

## 14mm 3/8" Sq Drive 12-Point Spark Plug Socket with Magnetic Retainer

3/8" Sq Drive

Magnetic

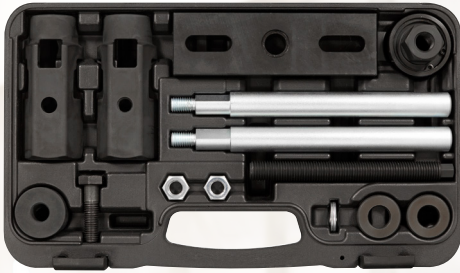
12



- Designed for use where plug clearance is tight.
- Standard depth, thin wall, 12-point 3/8" Sq drive 14mm socket with magnetic insert to retain spark plug.
- Magnetic insert to retain spark plug.
- Application: BMW.

Model No.  
SEA AK6568

## Diesel Injector Puller Ford EcoBlue 2.0L



- Suitable for Ford EcoBlue 2.0L engines.
- Easily extracts Ford EcoBlue diesel injectors in one piece so they can be refitted.
- Set includes a force screw, shoulder nut (with bearing), injector clamp, clamp bolt, support bridge and bridge legs with nuts (x2).
- Equivalent to OEM 303-1706.

**Model No.**  
**SEA VS2078**

## Injector Puller Set



- Suitable for the fast and safe removal of Bosch, Delphi, Denso and Siemens diesel injectors.
- Ball joint allows hammer to be used in confined areas.
- Set includes keys and deep open profile sockets, used to dismantle injectors, plus adaptors for attaching the slide hammer securely to the body of the injector
- Contents: Slide Hammer, 1/2" Sq Drive Sockets; 25, 27, 29, 30mm, Tamperproof Key, Adaptor (x5) (Bosch, Delphi, Denso, Siemens), Ball Joint.

**Model No.**  
**SEA VS2059**

## Triple Leg Cylinder Hone

3-Leg



- Flexible drive shaft and adjustable cutting control.
- Fitted with 28.5mm (1-1/8") medium grade stones with adjustable capacity from Ø25 to 64mm.
- Suitable for small and medium sized brake cylinders.

**Model No.**  
**SEA VS023**

## Diesel Injector Seal Puller Slide Hammer

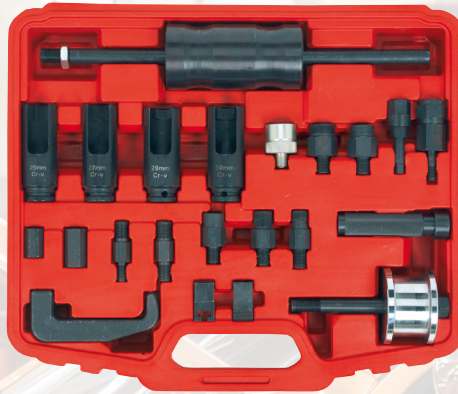


- Tapered threaded end that screws into the centre of the washer.
- Simply drop the tool into the hole left by the injector and use the slide hammer to pull the injector seal out.
- Allows Ø4.5 to 13.2mm internal diameter seals to be removed.
- Slide hammer is comfortable to hold while in use.
- Length 350mm.

**Model No.**  
**SEA VS2079**

## Injector Master Kit

Master



- Suitable for the removal of Bosch, Delphi, Denso, Siemens and Pumpe Duse diesel injectors.
- Kit includes keys and deep open profile sockets, used to dismantle injectors, plus a selection of adaptors for attaching the slide hammer securely to the body of the injector.
- Ball joint and choice of two sizes of slide hammer allow access in confined areas if required.
- Contents: Slide Hammers; 1.3kg with 150mm Shaft, 4kg with 400mm Shaft, 4kg Slide Hammer Handle, Flexible Joint, 10mm Security Hex Key, Male Adaptors; 10 x 1.5, 16 x 1.5, 17 x 1, 20 x 1, 25 x 1, 27 x 1mm, Female Adaptors; 14 x 1.5, 27 x 1mm (3pc), Hexagonal Adaptors; 17mm (10 x 1.5 Female), 21mm (14 x 1.5 Female), C and J Adaptors (Pumpe Duse), Claw Adaptor, Injector Cap Sockets 1/2" Sq Drive; 25, 27, 29, 30mm.

**Model No.**  
**SEA VS2064**

## Triple Leg Cylinder Hone 75mm Medium Stones

3-Leg



- For removal of heat glaze and carbon deposits on cylinder walls.
- Fitted with 75mm, medium grade cutting stones and suitable for cylinders up to Ø175mm.
- Range collar adjusts arm travel between Ø50mm and Ø100mm or Ø100mm and Ø175mm.
- Adjustable spring tension gives finish control.

**Model No.**  
**SEA VS162**

## Pneumatic Diesel Injector Puller



Pneumatic



- Fits most passenger and light commercial diesel injectors including Delphi, Denso, and Siemens.
- Uses vibration and pneumatic force to easily remove seized injectors.
- Set includes a pneumatic diesel injector puller, adaptors, air hose and a control valve with a 1/4" BSP connector.
- Maximum air supply 116psi (8bar).

**Model No.**  
**SEA VS2080**

## 4-in-1 Cylinder Hone Kit



- Four cylinder-honing tools in one kit covering 18mm to 89mm cylinder bores.
- Suitable for honing and de-glazing car brake and clutch cylinders plus motorcycle, outboard and lawnmower engine cylinders.
- Adjustable honing pressure and flexible drive shaft.
- Kit includes an assortment of 220Grit stones.

**Model No.**  
**SEA VS029**

# VEHICLE SERVICE TOOLS

## Valve Lapping Tool Attachment



- Automatic valve lapping action makes grinding valves quick and easier.
- Suitable for most engine valves, supplied with five sizes of rubber suction cups, 16, 20, 30, 35 and 45mm.
- Saves time and effort, the lapping tool provides better control and less fatigue for the user.
- Working speed 1000rpm to 1250rpm maximum.
- Use in conjunction with Sealey SEA CP108VDD minimum chuck size Ø10mm.

**Model No.**  
**SEA VS1654**

## 1/2" Sq Drive Angular Torque Gauge

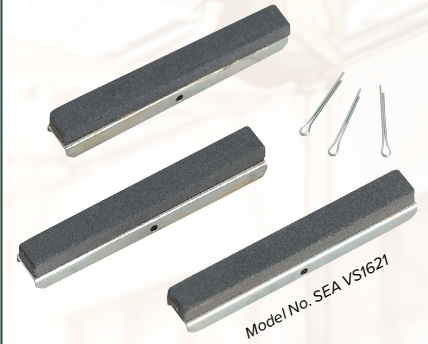
1/2" Sq Drive



- Designed to be used with any 1/2" Sq drive breaker bar.
- Tough composite dial and rotating index line allow operator to accurately tighten fixing to manufacturer's exact specification.
- Supplied with fully adjustable reaction arm.
- Essential measuring tool for the busy workshop.

**Model No.**  
**SEA VS530**

## 75mm Stones - Packs of 3



- Stone sets for Model No. SEA VS162 glaze breaker.

Model No.	Grade
<b>SEA VS1623</b>	Fine
<b>SEA VS1621</b>	Medium

## 50-160mm Dial Bore Gauge

MM



- Precision mechanism with Ø55mm dial and locking rotating bezel, offering an accurate method of measuring a bore or detecting a taper or ovality.
- Measuring Range: 50-160mm.
- Will indicate the deviation from set size by up to 3mm with an accuracy of 0.01mm.
- Probe body, dial indicator, anvils and spacer rings are also included.

**Model No.**  
**SEA DBG5010**

## 610mm Technician's Straight Edge

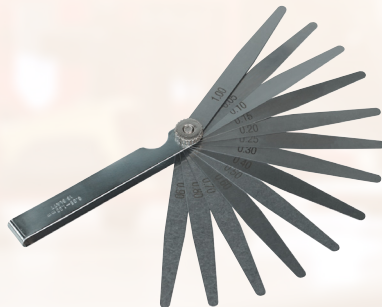


- Suitable for testing for distortion on cylinder heads and engine blocks during engine overhauls and rebuilds.
- May be used with feeler gauges for high precision work.
- Features peg hole for easy storage.
- Length: 610mm.
- Made from Carbon Steel.
- Supplied with protective edging for when not in use.

**Model No.**  
**SEA VS1481**

## 13 Blade Feeler Gauge

MM



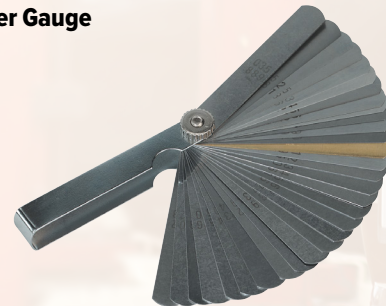
- Metric graduated 13 blade feeler gauge.
- Sizes: 0.05 to 1mm.
- Blade dimensions 95 x 10mm.

**Model No.**  
**SEA S0517**

**Siegen**

## 32 Blade Feeler Gauge Dual Marked

MM & IMP



- Imperial graduated 32 blade feeler gauge.
- Sizes: 0.0015" to 0.035" (0.038 to 0.889mm).
- Dual marked in Imperial and Metric.
- Includes 0.010" brass blade.
- Blade dimensions 90 x 13mm.

**Model No.**  
**SEA S0514**

**Siegen**

## 12 Blade Offset Feeler Gauge Dual Marked

MM & IMP



- Imperial graduated 12 blade feeler gauge.
- Sizes: 0.008" to 0.026" (0.203 to 0.660mm).
- Dual marked in Imperial and Metric.
- Blade dimensions: 95 x 13mm (45°-25mm offset).

**Model No.**  
**SEA S0516**

**Siegen**

## 26 Blade Offset Feeler Gauge Dual Marked

MM & IMP



- Imperial graduated 26 blade feeler gauge.
- Sizes: 0.005" to 0.030" (0.127 to 0.762mm).
- Dual marked in Imperial and Metric.
- Blade dimensions: 100 x 12.7mm (45°-25mm offset).

**Model No.**  
**SEA S0515**

**Siegen**

## Exhaust & Hose Clamp Pliers



- Opens exhaust hose clamps quickly and easily.
- Ideal for Citroen, Peugeot and Renault exhaust clamps.
- Also suitable for prising open any type of clamp or clip secured with nut and bolt.
- Comfort grip handles with self-locking mechanism aid working on spring clamps.

**Model No.**  
**SEA VS1666**

## Nitrogen Oxide Sensor Port Thread Chaser M22 x 1.5mm



- Manufactured from Chrome Vanadium steel with black phosphate finish.
- Suitable for cleaning and repairing damaged threads on the sensor port, prior to new sensor being fitted.
- Thread Size: M22 x 1.5mm.
- Use with 22mm socket or spanner.

**Model No.**  
**SEA VS536**

## Fuel Vaporiser Port Thread Chaser for Ford M20 x 1.5mm



- Manufactured from Chrome Vanadium steel with black phosphate finish.
- Suitable for cleaning and reforming threads on exhaust system fuel vaporiser ports.
- Short lead-in on thread allows thread to be cut as close as possible to internal seat of the exhaust.
- Thread Size: M20 x 1.5mm.
- Use with 21mm socket or spanner.

**Model No.**  
**SEA VS537**

## Coolant Flush Jet Wash Gun



- The coolant system stepped adaptor, enables thorough flushing of debris and contaminants from the cooling system during repair and maintenance.
- Wide nozzle adaptor uses air and water to form a powerful jet washer, which cleans or dries (air only).
- Air and water controls using a trigger for adjusting air pressure, and a lever for adjusting the water flow.
- Durable hard-wearing Acetal plastic.
- Can be used in many other applications when a water system requires cleaning or unblocking.
- Standard garden hose connector with swivel feature.
- Operating pressure: 87-145psi/6-10bar.

**Model No.**  
**SEA VS0050**

## Refractometer Antifreeze/Battery Fluid/Screenwash

- Tests:
- Battery Fluid
  - Antifreeze
  - Screenwash



- Accurately measures the strength of battery fluid, screenwash and antifreeze by measuring the refractive index of light passing through the mixture.
- Suitable for synthetic antifreeze mixtures including long-life OAT (Organic Acid Technology) and G13.
- Temperature corrected prism ensures accuracy.
- Eyepiece with adjustable focus.

**Model No.**  
**SEA VS005**

## 250ml Combustion Leak Detector Fluid



- Suitable for use with Model No's VS0061 and VS0062 Combustion Leak Detectors and other leading brands of detector.
- Fluid changes colour on detection of CO<sub>2</sub> gas.

**Model No.**  
**SEA VS0061F**

## Ethylene Glycol Antifreeze Tester Dial Type



- Tests ethylene glycol strength with engine hot or cold.
- Composite body and rubber bulb for workshop durability.

**Model No.**  
**SEA AK409**

## Ethylene Glycol Antifreeze Tester Disc Type



- Checks condition of coolant antifreeze, hot or cold.
- Protection level is indicated by the number of discs floating in the sample.
- Easy-to-read temperature table.
- Tough, virtually unbreakable, plastic body.

**Model No.**  
**SEA AK4120**

## AdBlue® Tester - Disc Type



- Checks condition of AdBlue®.
- Condition is indicated by the number of discs floating in the sample.
- Easy-to-read test procedure on robust plastic body.

**Model No.**  
**SEA AK4125**



# VEHICLE SERVICE TOOLS

## Remote Action Hose Clip Tool

630mm

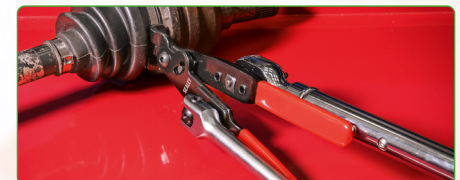


- Long reach tool designed for awkwardly positioned tag-type hose clips.
- Flexible cable and compact head help operation in confined spaces.
- Features ratchet action and vinyl dipped handles for comfort and close control.
- Length: 630mm.

**Model No.**  
**SEA VS1663**

## Extra-Heavy-Duty Ear-Type Clip Pliers

**EXTRA  
HEAVY  
DUTY**



- Steel jaws with PVC coated handles for added comfort.
- Each handle features a 1/2" Sq drive for use with a torque wrench and breaker bar where vehicle maker demands specific band tensions.
- Suitable for all ear-type CVJ boot clips.
- Length: 240mm.

**Model No.**  
**SEA VS1639**

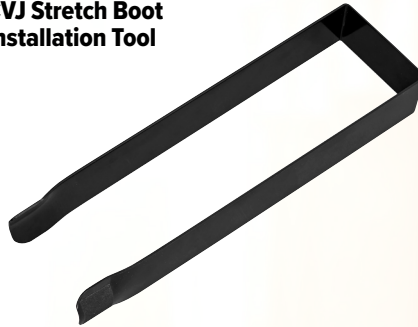
## CVJ Boot/Hose Clip Tool with Cutter



- Quality made tool designed to aid fast tensioning and securing of CVJ boot banding material.
- Simply insert banding, tension using winding mechanism, and then pull over lever to cut the band to length.
- Fitted with large and comfortable handle.

**Model No.**  
**SEA VS1636**

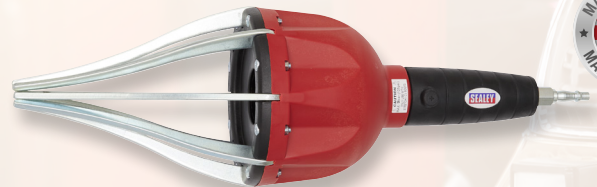
## CVJ Stretch Boot Installation Tool



- Enables installation of CVJ boot in situ without splitting the drive train.
- Slim design ideal for fitting CVJ boots where access is limited.
- Suitable for use with all Sealey CVJ stretch boots.
- Length: 442mm.
- Maximum CVJ diameter: Ø122mm.
- Use in conjunction with Sealey SEA VS705.

**Model No.**  
**SEA VS701**

## CVJ Boot Tool - Air



- Innovative tool saves time, money and frustration.
- Installs CVJ boots without removing drive shafts from the vehicle or the CV joint from the drive shaft.
- No effort and no mess!
- Save on labour time by up to 70% and prevent damage to CV joint.
- Composite body with simple control valve, works from standard workshop air supply.
- While fitting boot the tool can be removed from the air line when pressurized (arms open) and will maintain pressure until the release button is pressed.
- Suitable for cars and light commercial vans.

**Model No.**  
**SEA BSL103**

## 2pc Hose Clip Pliers Set

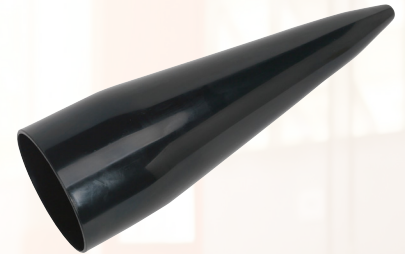
**HEAVY  
DUTY**



- Heavy-duty construction with PVC dipped handles for added comfort and grip.
- Special 'V' slot and cross slot jaws for installation and removal of tag and wire type hose clips.
- Pliers with ratchet locking mechanism for ease of use on lower radiator hoses.
- Swivel jaws allow use where access is confined.
- Length: 220mm.

**Model No.**  
**SEA VS1665**

## CVJ Boot Installation Tool



- Composite cone.
- Enables installation of CVJ boot without splitting drive train.
- Suitable for use with all Sealey CVJ stretch boots.

**Model No.**  
**SEA VS705**

## Thread Repair Kits

- Creates a stronger internal thread in soft metals.
- Ideal for repairing damaged or stripped internal threads.
- Protects tapped threads against wear and damage.
- Sets include drill bit, thread tap, insert installation and lug breaking tool.
- Each size supplied with three different lengths of thread insert.

Model No.	Thread Size	Thread Lengths
SEA TRM6	M6 x 1mm	4, 6, 9mm (x5)
SEA TRM8	M8 x 1.25mm	6, 9, 12mm (x5)
SEA TRM9	M9 x 1.25mm	7, 14mm (x3), 11mm (x4)
SEA TRM10	M10 x 1.5mm	7.5, 15mm (x3), 11mm (x4)
SEA TRM12	M12 x 1.75mm	9, 18mm (x2), 14mm (x4)
SEA TRM14	M14 x 1.25mm	10, 21mm (x1), 16mm (x3)



MM

## Thread Inserts



Model No.  
SEA TRM6R

- Thread inserts for SEA TRM6-TRM14 Thread Repair Kits.

Model No.	Thread Size
SEA TRM6R	M6 x 1mm
SEA TRM8R	M8 x 1.25mm
SEA TRM9R	M9 x 1.25mm
SEA TRM10R	M10 x 1.5mm
SEA TRM12R	M12 x 1.75mm
SEA TRM14R	M14 x 1.25mm

## Drain Plug Thread Repair Set



- Superb for repairing sump, gearbox and differential drain plug threads.
- Used to tap the damaged thread slightly oversize, then fit a new drain plug and washer (supplied).
- Set is suitable for the most popular threads used on cars and light commercial vehicles.
- Tap Sizes: M13 x 1.5, M15 x 1.5, M17 x 1.5, M20 x 1.5mm.

**Model No.**  
**SEA VS660**



Model No. SEA VS660.05    Model No. SEA VS660.06  
Model No. SEA VS660.07    Model No. SEA VS660.08  
Model No. SEA VS660.11

Spare Part Model No.	Description
SEA VS660.05	Sump Plug M20
SEA VS660.06	Sump Plug M17
SEA VS660.07	Sump Plug M15
SEA VS660.08	Sump Plug M13
SEA VS660.11	Spacer M15

## Oil Drain Plug Thread Repair Set - M15

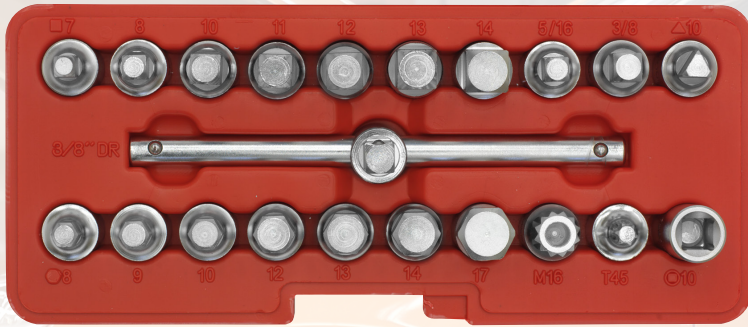


- Ideal for repairing sump, gearbox and differential drain plug threads.
- Used to tap the damaged thread slightly oversize, then fit a new drain plug and washer.
- Tap Size: M15 x 1.5mm.

**Model No.**  
**SEA VS615**

## 21pc 3/8" Sq Drive Oil Drain Plug Key Set

**3/8" Sq Drive**



- Comprehensive set of Chrome Vanadium steel keys with sliding T-bar.
- Suitable for sump plugs on engine, gearbox and back axle.
- Contents: Square Male; 7, 8, 10, 11, 12, 13, 14mm, 5/16", 3/8", Square Female; 10mm, Hex; 8, 9, 10, 12, 13, 14, 17mm, Triangle; 10mm (PSA), Security Splines; M16 (VAG), TRX-Star\*; T45 (Vauxhall/Opel), 3/8" Sq Drive Sliding T-Bar.

**Model No.**  
**SEA AK6586**

## T-Handle Oil Drain Plug Key - VAG

**VAG**



- Designed specifically for the plastic sump plugs found on the VAG TFSi engines.
- Also designed for use on the cam cover of new 1.6 and 2.0 twin cam diesel VAG engines.
- Features T-handle for quick operation.

**Model No.**  
**SEA VS653**

## Ø120mm Strap Wrench



- Suitable for removing and installing oil filters as well as many other applications.
- Adjustable strap fits filters up to Ø120mm.

**Model No.**  
**SEA AK6406**

## Ø60-140mm Oil Filter Strap Wrench

**Ø60-140mm Capacity**



- Satin finished, drop-forged steel body with hanging hole.
- Reinforced, rubberised strap.

**Model No.**  
**SEA AK6404**

## 1/2" Sq Drive Oil Filter Chain Wrench

**Ø135mm Capacity**  
**1/2" Sq Drive**



- Satin finished carbon steel body with 1/2" Sq drive for use with ratchet wrench.
- May also be used with a 20mm spanner.
- Heavy-duty chain.
- Drive: 1/2" Sq.

**Model No.**  
**SEA AK641**

## Automatic Gearbox Oil Filler Set Mercedes 9G-Tronic



- Suitable for 9G Tronic 725 series gearboxes fitted to Mercedes E350 BlueTEC (2013on) and CLS models (2014on).
- Contains a socket wrench to adjust oil level and a quick release coupling.
- Designed for drain and refilling operations.

**Model No.**  
**SEA VS589**

## Transmission DSG Oil Filler Adaptor - VAG

**VAG**



- Oil filling pipe for VAG DSG transmission that allows simple filling of the gearbox.
- M24 x 1.5mm Male thread with a 1.5m durable plastic hose and an M37.5 x 3mm female thread adaptor which attaches to the oil container.
- Aluminium connectors that are hardwearing and robust.
- Knurled edges for superior grip when attaching to the gearbox even with oily hands.
- OEM Tool: VAS6262A.

**Model No.**  
**SEA VS70099**

# VEHICLE SERVICE TOOLS

## Oil Filter Cap Remover - Ford/Jaguar/Citroen/Peugeot 2.0D/2.2D Diesel



- Suitable for removing the cap from the oil filter housing on Ford, Citroen, Peugeot 2.0D/2.2D HDi/TDCi diesel engines (DW10C, DW12C) and Jaguar XF 2.2D from 2012 onwards.
- Allows access to the hard-to-reach 27mm hex located on the filter cap.
- Use with 1/2" Sq drive wrench.

**Model No.**  
**SEA VS7200**

## Ø64.5mm Oil Filter Cap Wrenches 14 Flutes

**3/8"**  
Sq Drive



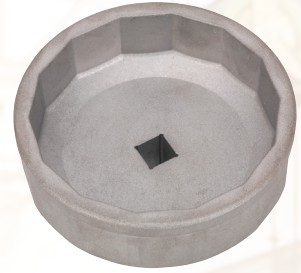
Model No. SEA VS7111

- Crowned tops provides extra leverage points for removing stubborn oil filter housing caps.
- Aluminium alloy material minimizes risk of damage to filter housing.

Model No.	Applications
SEA VS7111	Toyota
SEA VS7112	Lexus/Toyota

## Ø74mm Oil Filter Cap Wrench 14 Flutes

**3/8"**  
Sq Drive



- Cap type filter wrench prevents damage to filter housing.
- Will withstand up to 115Nm(85lb.ft) of torque.
- Low profile design suitable for use in confined areas.
- Applications: Purlux groove filters fitted to Audi, BMW, Citroen, Fiat, Ford, Lancia, Mazda, Mercedes, Nissan, Peugeot, Porsche, Renault, Suzuki, Toyota, Vauxhall/Opel, VW.

**Model No.**  
**SEA SX226**

## Ø75-95mm Oil Filter Wrench

**Ø75-95mm**  
Capacity



- Spring loaded serrated jaws provide firm grip to oil filter.
- Slim design allows access in tight spaces.
- Capacity: Ø75-95mm.

**Model No.**  
**SEA AK6420**

## Ø65-105mm Oil Filter Band Wrench



- Band type filter wrench.
- Steel strap with heavy-duty cast body and control knob.
- Removes filters with minimal risk of damage.

**Model No.**  
**SEA AK644**

## 3L Transmission Oil Filling System

**3L**



- Pump operated oil dispensing unit with a 3L capacity.
- Supplied with five multipurpose and three vehicle specific automatic transmission fluid adaptors.
- Features a fluid control and depressurising valve.
- Hose Length: 1.5m.

**Model No.**  
**SEA VS70095**

## 17pc Universal Clutch Aligning Tool Set



- Chemically blackened steel components in storage case.
- Aids alignment of clutch plate for assembly.

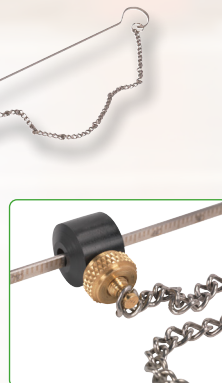


**Model No.**  
**SEA AK710**

## 600mm Engine Dipstick - Audi



- Designed to measure the engine oil levels on Audi vehicles fitted with electronic oil level systems.
- Can also be used to calibrate the driver's instrument panel.
- Will also check the engine oil level on Audi; A4/A5 3.2 6-cylinder engines.



**Model No.**  
**SEA VS600ED**

## Universal Clutch Alignment Tool



- Nylon components with steel main shaft.
- Fits 90% of cars and light vans up to 5 Tonne gross (not suitable for vehicles with double plate clutches).
- Supplied with three different sized expanding collets.

**Model No.**  
**SEA VS010**



## Brake Bleeder Set with Container

0.1L Capacity



- Composite collection bottle with magnetic locating pad.
- Capacity: 100ml.
- Supplied with tube and connectors.

Model No.  
SEA VS0201

## 2L Hi-Flow Twin Pipe Brake Bleed Bottle

2L Capacity

- Used for normal brake bleeding with a clear hose to evaluate the condition of the fluid and the presence of air.
- High-flow twin brake bleed pipes for use on ABS service bleed when two valves need to be opened at once and on calipers with two bleed nipples which are found on high-performance vehicles and motorcycles.
- One-person bleeding with a 2L collection bottle and a wide base for added stability.
- Hanging hook and drain cap for simple emptying of old brake fluid.
- 2.2m Hose length, which can be cut to length to suit specific workshop needs.
- Can be used with any push-through brake bleed systems including Sealey SEA VS0204, SEA VS0207, SEA VS820, SEA VS830 and SEA VS0215.

Model No.  
SEA VS0218



## 2.5L Brake & Clutch Bleeding System

2.5L Capacity

- One-person brake and clutch bleeding the professional way. Bleeding requires no external power source - simply fill and pump.
- Reservoir holds 2.5L of hydraulic fluid - flush the entire system with one fill, without the risk of running the reservoir dry.
- Pressure range makes unit suitable for use with ABS systems.
- Fitted with Ø45mm cap with 90° angled connector which is suitable for most European models.
- For alternative Brake & Clutch Bleeder Caps, order Model No's SEA VS820SA, SEA VS820UA, SEA VS0204B, SEA VS0204T, SEA VS0204C4 and SEA VS0204C.

Model No.  
SEA VS820



## 1.2L Pneumatic Vacuum Brake & Clutch Bleeder

Premier

1.2L



- One-person operation using standard workshop air supply (87-174psi/6-12bar). With a flexible hanging hook.
- Durable hard-wearing Acetal plastic.
- Trigger for adjusting air pressure, with an added trigger lock.
- Draws fluid from the bleeding nipple enabling either bleeding or full replacement of fluid in the system.
- Clear PVC hose easily checks for air bubbles. Hose length 1.5m.
- Does not require specialised brake reservoir caps.

Model No.  
SEA VS0220



## 2.5L Pneumatic Brake & Clutch Bleeder

2.5L Capacity

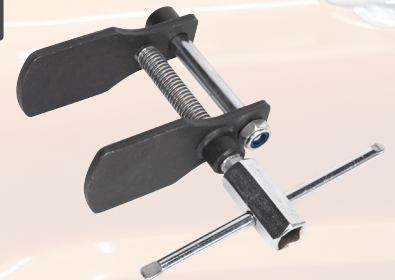
- One-person professional pneumatic brake and clutch bleeding tool.
- Reservoir holds 2.5L of hydraulic fluid - flush the entire system with one fill, without the risk of running the reservoir dry.
- Pressure range makes the unit suitable for use with ABS systems.
- Fitted with Ø45mm cap with a 90° angled connector which is suitable for most European models.
- Compatible with Sealey SEA VS0204B, SEA VS0204C, SEA VS0204C4, SEA VS0204T, SEA VS820UA and SEA VS820SA brake caps.

Model No.  
SEA VS830



## Disc Brake Piston Spreader Tool

1/2" Sq Drive



- Chemically blackened steel spreader plates.
- An essential tool for retracting the brake piston to allow insertion of new brake pads.
- Suitable for most ATE, Bendix, Delco and Girling calipers.

Model No.  
SEA AK711

## 5pc Brake Piston Wind-Back Tool Kit

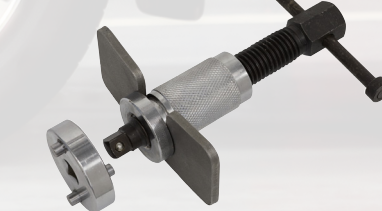


- Innovative dual purpose tool designed to push and wind-back brake calipers.
- Fast and simple, one-handed use.
- Lightweight and durable materials enable the tool to work on most common caliper designs.
- Suitable for use on either left or right-handed wind-back calipers.
- Supplied with four common adaptors but compatible with all 2-pin magnetic adaptors in the Sealey range, making the tool truly versatile.

Model No.  
SEA VS0211



## Brake Piston Wind-Back Tool with Double Adaptor



- Double end tool.
- Enables retraction of the piston on rear brake calipers allowing new brake pads to be installed.

Model No.  
SEA VS024

## Rear Brake Piston Wind-Back Adaptor - VAG

VAG



- Adaptor enables retraction of the piston on rear brake calipers when used in conjunction with a traditional wind-back tool with a 2-pin adaptor mounting.
- Applications: Model No's. SEA VS0211, SEA VS0240, SEA VS0282, SEA VS0285, SEA VS0286, SEA VS0287.
- 3-Pin design suitable for VAG vehicles.

Model No.  
SEA VS02821

# VEHICLE SERVICE TOOLS

## 4-in-1 Automotive Deluxe Pipe Bender



- Twin handles provide even force for accurate pipe forming.
- Slender design allows pipes to be shaped in situ.
- Ideal for aluminium, brass, copper and steel pipe.
- Contoured vinyl grip handles provide extra comfort and control.

**Model No.**  
**SEA VS0346**

## Brake Pipe Straightening Tool



- Brake pipe straightener designed for use on automotive applications.
- This unique design is fast and easy-to-use.
- Suitable for 3/16"(4.76mm) cupro-nickel, copper and steel pipe.
- Features hole for marker pen.

**Model No.**  
**SEA VS0506**

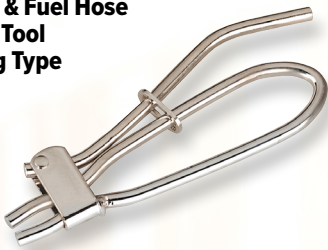
## 4pc Brake & Fuel Hose Pinch Tool Set



- Light and compact steel alloy construction for ease of use where space is limited.
- Rounded jaw edges prevent damage to internal hose reinforcements.
- Suitable for use on fuel, vacuum and brake hoses.

**Model No.**  
**SEA VS0301**

## Brake & Fuel Hose Pinch Tool Spring Type



- Completely or partially seals flexible brake, fuel and vacuum lines.
- Smooth rounded jaw edges prevent damage to internal hose reinforcement.
- Quick and simple-to-use.
- All steel construction with sliding lock collar.

**Model No.**  
**SEA VS0304**

## Brake Shoe Spring Pliers



- Purpose-made for the installation and removal of drum shoe return springs.
- Also used for removal/installation of spring from anchor stud.
- Fits most cars and light commercial drums.

**Model No.**  
**SEA VS0305**

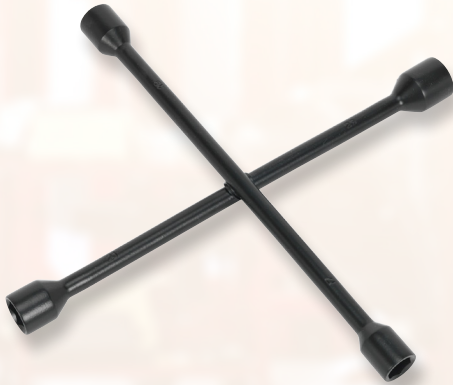
## Brake Shoe Adjuster



- Designed for use on hydraulic braking systems.
- Adjusts the clearance between the brake drum and shoe.
- May be used to lever the brake shoe to adjust the mechanical adjuster or through slots in the backing plate to turn the star wheel type adjuster.
- Suitable for cars and light commercials.

**Model No.**  
**SEA VS0355**

## 4-Way Wheel Brace

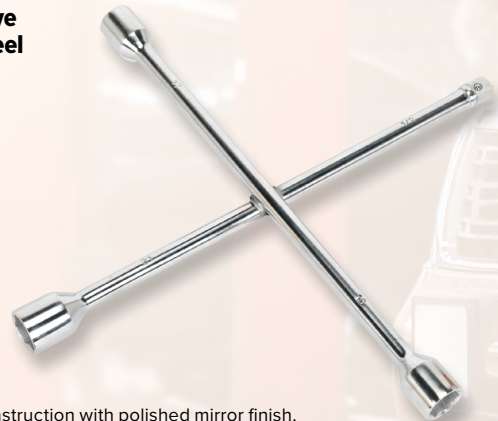


- Forged construction with hot forged sockets and baked finish.
- Socket Sizes: 17, 19, 21, 22mm.

**Model No.**  
**SEA AK2090**

## 1/2"Sq Drive 4-Way Wheel Brace

1/2"  
Sq Drive



- Forged construction with polished mirror finish.
- Features three popular size wheel nut sockets and 1/2"Sq drive adaptor for standard sockets.
- Socket Sizes: 17, 19, 21mm.

**Model No.**  
**SEA AK2093**

## 1/2"Sq Drive Alloy Wheel Impact Socket Star Profile for Mercedes

1/2"  
Sq Drive 17mm



- Star profile wheel nut socket which is now used on some Mercedes vehicles.
- Manufactured from Chrome Molybdenum with protective sleeve.

**Model No.**  
**SEA SX0417**

## 14 Tonne Hydraulic Floating Brake Disc Press

**Hydraulic**

- Commercial 14 Tonne brake disc press set for the removal of seized brake discs from hub assemblies.
- Low-profile rams sit between the disc and hub with two independent regulator valves providing safe controlled detachment.
- Rams closed/open height range between 83-128mm.
- Compatible with male 1/4"BSP threads.
- Applications: DAF, Renault and Volvo commercial vehicles.
- Use in conjunction with SEA RE83/840/CWH Hydraulic Air Pump or SEA RE97.10-01 Hydraulic Manual Pump (not included).



**Model No.**  
**SEA CV050**

## Single Barrel Foot Pump

0-100psi

- Steel framed foot pump with Ø50 x 120mm steel barrel.
- Dial type pressure gauge with rotating bezel.
- Gauge calibrated in psi and bar and ranges from 0-100psi and 0-7bar.
- Fitted with 610mm of flexible pressure hose with clip-on type connector.
- Supplied with accessory for inflating items such as small inflatable boats, air beds and balls.



**Siegen**

Model No.  
SEA S0540

## Tyre Inflator with Clip-On Connector

0-145psi

- Die-cast body and dial type gauge with rubber protector.
- Fitted with single clip-on connector.
- Range: 0-10bar(0-145psi).
- 1/4"BSP Air inlet.



Model No.  
SEA SA924

## Tyre Inflator with Clip-On Connector

0-145psi

- Composite body and dial type gauge with rubber protector.
- Range: 0-10bar/0-145psi.
- Fitted with 500mm rubber hose and single clip-on connector.



Model No.  
SEA SA9302

## Jumbo Tyre Inflator with Clip-On Connector

0-100psi

- Composite body and dial type jumbo gauge with rubber protector.
- Calibrated in bar and psi.
- Fitted with 400mm rubber hose and single clip-on connector.



Model No.  
SEA SA9303

## Tyre Pressure Gauge with Clip-On Connector

0-100psi

**LRO RECOMMENDED**

- Robust gauge with protective rubber bumper.
- Supplied with clip-on connector.
- Scale: 0-7bar/0-100psi.



Model No.  
SEA TST/PG6

## Tyre Pressure Gauge with Twin Connector

0-220psi

- Dial type pressure gauge with twin connector, reading up to 15bar(220psi).
- Metal body, long reach connector and high range scale.
- Arm Length: 120mm.
- Compatible with both cars and commercial vehicles.



Model No.  
SEA TSTPG34

## Digital Tyre Pressure & Tread Depth Gauge

3-150psi



- Tyre pressure gauge with integral tread depth gauge and worklight.
- Push-button operation with backlit LED display for tyre pressure.
- Read-out available in bar, psi, kg/cm<sup>2</sup> or kPa.
- Integral tread depth gauge reads up to 20mm.
- Auto-power-off.



Model No.  
SEA TSTPG11

## 940mm Tyre Lever - Commercial

- Carbon steel tyre lever with hook ends.
- Suitable for use on commercial vehicle tyres.



Model No.  
SEA VSTL940

## Tyre Tread Depth Gauge Pocket Type

MM & IMP

- Chromed steel body with pocket-clip.
- Scale from 0-25mm in 1mm(0-1" in 1/32") graduations.



Model No.  
SEA TST/DGE

## Tyre Valve Core Tool

- Used for removal and installation of the core from a wheel valve.
- Features easy grip handle and ideal for the busy workshop.
- Suitable for motorcycles, cars and commercial vehicles.



Model No.  
SEA TST/VCT

# VEHICLE SERVICE TOOLS

## Steering Turntables - Pair



- Use in conjunction with Caster Kingpin Gauge Sets for accurate castor and kingpin alignment.
- Also measures steering angles.
- Locking pins prevent rotation of table whilst driving vehicle on and ensure accurate angular measurements.
- Measures up to 55° rotation in either direction.
- Maximum loading 4000kg per pair.

**Model No.**  
**SEA GA44**

## 1500kg Hydraulic Coil Spring Compressing Station

**1500kg**

**Hydraulic**



- 1500kg Capacity foot-operated hydraulic unit.
- Quicker and easier than using ratchet driven spring compressor.
- Plastic coated yokes reduce the risk of spring slippage/damage.
- Suitable for springs from Ø80mm to Ø175mm.

**Model No.**  
**SEA RE231**

## 85mm Impact Socket - Commercial 1" Sq Drive

**1"**  
**Sq Drive**



- Chrome Molybdenum, drop-forged, 6-point impact socket.
- Phosphate finish for greater corrosion resistance.
- Ideal for use with air impact wrenches.

**Model No.**  
**SEA CV085**

## Steering Rack Knuckle Tool



- Suitable for the fast and easy removal of the steering knuckle.
- Fits racks with hex drive, two flats and round ends.
- Ideal for vehicles with limited access and avoids the need to remove the rack assembly.
- Suitable for steering rack knuckles with a diameter of Ø33-41mm.

**Model No.**  
**SEA VS4000**

## Steering Wheel Level

- Used to level the steering wheel before locking into position, prior to checking/adjusting the front wheel alignment.
- Ideal for use with 4-Wheel Laser Aligners such as Model No. GA70.
- Self-retaining and centring using a spring loaded mechanism.
- Features a level bubble to show horizontal position.
- Suitable for steering wheels with an internal diameter of between Ø270mm and Ø340mm.



**Model No.**  
**SEA GA460**

## 12V 13-Pin Towing Socket Tester DVSA Approved

**12V**

**13-PIN**  
Euro Plug

**7-PIN**  
N-Type Plug



- DVSA Approved for use in testing stations on vehicle classes 4, 5 and 7.
- Quick and simple test of 12V 13-pin Euro-type sockets fitted to the rear of the vehicle.
- Supplied with 4.9m cable to enable the operator to use the tool whilst sitting in the vehicle.
- Features self-test facility to ensure the serviceability of the tool.
- Also tests the 12V continuous/ignition live feeds and the reversing lights - not part of the current MOT test, but useful when diagnosing electrical faults.
- Includes 13 to 7-pin adaptor for testing older wiring systems.

**Model No.**  
**SEA TST22**

## 2pc Coil Spring Compressor

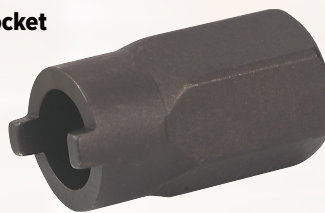
**1000kg**



- Hardened carbon steel lead screws and cast jaws.
- Wrapover coil claws for extra safety.
- Suitable for use where space under wheel arch is limited.
- Use with 1/2" Sq drive wrench.
- Maximum Jaw Opening: 244mm.
- Maximum Capacity Per Pair: 1000kg.

**Model No.**  
**SEA AK3841**

## Strut Nut Socket Audi, VW



- Suitable for the removal and installation of top shock retaining nut.
- Location pegs fit into slots cut in the retaining ring and allow hex key access through the centre for release/adjustment of the shock.
- Internal Diameter x Tooth Width: Ø14.5 x 5mm.
- Use with 22mm spanner.

**Model No.**  
**SEA SX028**

## 2pc 1/2" Sq Drive Strut Leg Pry Socket Set

**1/2"**  
**Sq Drive**



- Reduces risk of damage to hub casting.
- Includes two sizes of pry socket: 7 x 5mm and 8.2 x 5.5mm.
- Suitable for removal and installation of strut legs on most Audi, Ford, Peugeot, Renault, Seat, Skoda, VW.

**Model No.**  
**SEA SX034**

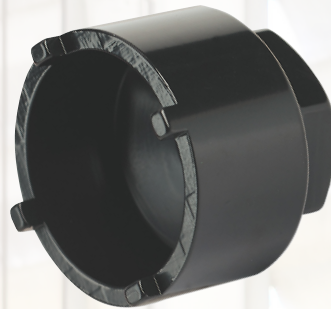
## Ball Joint Splitter



- Forged steel body with phosphate finish.
- Suitable for most small cars and light vans.

**Model No.**  
**SEA AK382**

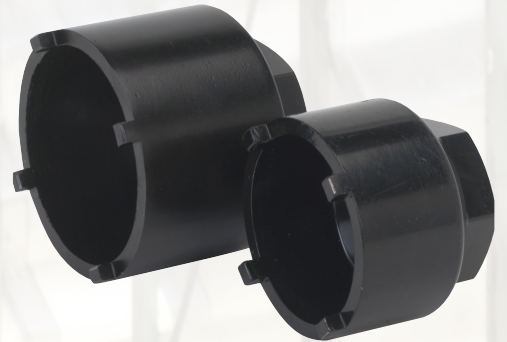
## Lower Ball Joint Socket Peugeot 405/Citroen



- Heat treated alloy steel socket.
- 35mm Hex drive with Ø19mm internal clearance for OEM and non-OEM fittings.
- Ø50mm Ring with drive pegs which locate in slots cut in the ball joint flange.
- Suitable for Citroen and Peugeot 405 lower ball joints.

**Model No.**  
**SEA SX027**

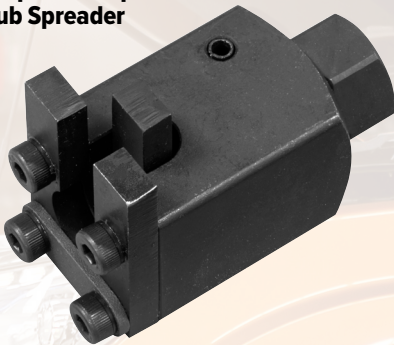
## 2pc Lower Ball Joint Socket Set



- Set of two heat treated alloy steel sockets.
- Suitable for removal of OEM and aftermarket lower ball joints.
- Applications: Citroen; Xantia, C5, C6, Peugeot; 405, 406, 407, 605, 607.

**Model No.**  
**SEA SX0271**

## Suspension Split Hub Spreader



- Easy removal and fitting of suspension struts whilst leaving the hub in situ on the vehicle.
- 14mm maximum spread reduces the risk of damage to hubs when removing the suspension strut.
- 17mm nut, to be used with hand tools only.
- Can be used on most makes of passenger and light commercial vehicles.

**Model No.**  
**SEA VS391**

## 42mm Ball Joint Splitter



- Chemically blackened forged steel body with thrust bolt.
- High strength construction, suitable for splitting commercial vehicle ball joints.
- Jaw Width: 42mm.
- Jaw Capacity: 62mm.

**Model No.**  
**SEA VS3805**

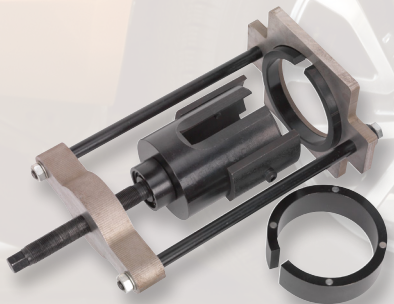
## Ball Joint Splitter - Commercial



- Chemically blackened forged steel body with thrust bolt.
- Maximum Opening: 65mm.
- Jaw Width: 30mm.
- Suitable for commercial applications.

**Model No.**  
**SEA VS3812**

## Trailing Arm Bush Tool - Ford, Volvo



- Suitable for the removal/installation of the rear trailing arm mounting bushes on Ford vehicles.
- Can be used in situ without removing the arm from the vehicle.
- Also suitable for some Volvo vehicles that share the same Ford platform.

**Model No.**  
**SEA VSE4784**

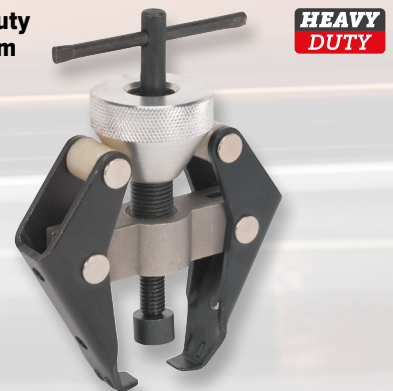
## Wiper Arm Removal Tool



- Cast housing with ball-end thrust bolt for the fast and safe removal of taper mounted windscreen wiper arms.

**Model No.**  
**SEA VS806**

## Heavy-Duty Wiper Arm Puller



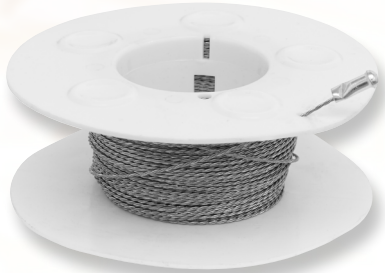
- Heavy-duty construction with locking feature allowing secure fastening to the wiper arm before commencing pull.
- With swivel mounted thrust bearing and tommy bar, the tool releases the most stubborn wiper arms.
- Also suitable for battery terminal and alternator bearing removal.
- Maximum Opening: 28mm.
- Maximum Collar Size: 43mm.

**Model No.**  
**SEA VS807**

# VEHICLE SERVICE TOOLS

## Windscreen Cutting Wires

Model No. SEA WK0513



- Braided and square stainless steel wire suitable for use with wire grips.
- Use a sawing action to cut through the urethane bond.
- The square profile has four cutting edges enabling a fast and easy cut, even in cold conditions.

Model No. SEA WK0514



Model No.	Wire Type
SEA WK0513	Braided
SEA WK0514	Square

## Razor Blade Scraper



- Scraper with soft grip handle and hanging hole.
- Suitable for removing adhesive or paint from glass or metal surfaces.
- Pack of five replacement razor blades

Model No.  
SEA AK52504

## 4pc Mini Hook Set



- Chrome finish shafts with knurling for fingertip precision.
- Suitable for removal of bushings, cotter pins, O-rings and seals.
- Classic style handle.
- Overall Length: 125mm.

Model No.  
SEA AK521

## O-Ring & Seal Pick



- Double end tool suitable for use with all types of O-ring and grease seal.
- Knurled barrel gives extra grip to greasy hands.

Model No.  
SEA AK522

## Bumping Mallet



- Bumping mallet manufactured with a rubber filler which has an elastic feel but is hard when in use.
- Hex head shape that can distribute force evenly.
- Ergonomic soft grip handle which prevents hand fatigue.
- Non-marring rubber that avoids scratching, so ideal for door weatherstrips, upholstery, trim, panels and bumpers.
- Mallet length: 260mm.

Model No.  
SEA AK527

## 12pc Trim & Upholstery Tool Set



- Comprehensive set, designed to simplify trim and trim stud removal.
- Manufactured from resilient nylon to minimize panel damage and marking.
- Includes 11 trim and upholstery tools, and trim hammer.
- Supplied in a heavy-duty storage pouch.

Model No.  
SEA RT12KIT

## 6pc Mini Panel Removal Set



- Tools with slim profile to simplify removal of small trim items and panels.
- Ideal for removal of dash trim and internal fittings.
- Manufactured from resilient nylon to minimize panel damage and marking.

Model No.  
SEA RT6KIT

## Door Trim Clip Tool



- Suitable for the removal of door trim clips on most vehicles.
- Features coated U-profile tip to reduce the risk of damage to surrounding trim and contoured textured comfort grip handle.

Model No.  
SEA RT007

## Trim Clip Removal Pliers



- Spring loaded pliers for trim clip removal without trim damage.
- Easy-access into confined areas, such as bumper covers.
- Length: 240mm.

Model No.  
SEA RT004

## Stud Remover & Installer

1/2"  
Sq Drive

MM



- Suitable for the removal and installation of various sizes of stud.
- Cam rotates to grip onto the stud for quick and easy use.
- Use with 1/2" Sq drive ratchet wrench.

Model No.  
SEA VS7232

## 2pc Lightweight Front Seat Protector Set



- Set includes two reusable front seat covers.
- Manufactured from water-resistant lightweight nylon.
- Ideal for protecting the vehicle's interior from dirt, grease and oil, as well as food and drink spills.
- Suitable for most cars and light commercial vehicles.
- Can be fitted to seats with or without airbags.
- Seat Back (H x W): 850 x 600mm.
- Seat Base (W x D): 600 x 440mm.

**Model No.**  
**SEA CSC5**

## 80mm Front Hub Nut Socket Scania 3/4" Sq Drive

**3/4"**  
Sq Drive



- Drop-forged, 8-point, steel impact socket designed for the removal of front hub nut found on Scania trucks.

**Model No.**  
**SEA CV001**

## Needle Nose Grease Dispenser



- For use with all brands of manual grease gun (not for use with power greasers).
- Dispenses a fine bead of grease.
- Long nozzle provides access for hard-to-reach areas.
- Ideal for lubricating constant velocity joints.

**Model No.**  
**SEA AK447**

## 2m Ratchet Parts Hanger/Tie Downs with S-Shaped Hooks - Packs of 2

- Heavy-duty zinc S-shaped hooks.
- Rope length: 2m.
- Convenient thumb lever pulley ratchet system.
- For hanging parts such as calipers and exhausts without the need for removing components.
- Can also be used to tie down general items in the workshop and at home.



Model No. SEA VS0114



Model No. SEA VS0118

Model No.	Size	Breaking Strength
SEA VS0114	Ø1/4"	35kg
SEA VS0118	Ø1/8"	68kg

## 4pc Dashboard Protection Set



- Protects the dashboard, roof lining and trim when removing the windscreen.
- Durable high-strength plastic.
- Non-slip handle for secure placement.

**Model No.**  
**SEA AK528**

## 3-Way Fill Pistol Type Grease Gun

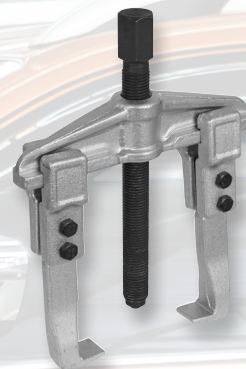


- Pistol style gun with contoured pump handle.
- Die-cast pump head with air-bleed valve.
- 3-Way fill with cartridge, bulk or manual capability.
- Rigid delivery tube and push-on hydraulic 4-jaw coupling.
- Accepts standard 400g cartridges.
- Delivery per Stroke: 1.25cm<sup>3</sup>.
- Optional 300mm Flexible Delivery Tube Model No. SEA GGH300.

**Model No.**  
**SEA AK446**

## Twin Leg Puller Bar Type 80 x 100mm

**HEAVY DUTY**



- Heavy-duty twin leg bar type puller.
- Easy removal of pulleys, flywheels, bearings and gears.
- Drop-forged Chrome Vanadium steel.
- Heat treated for added strength.
- Zinc plated for corrosion resistance.
- Thrust bearing prevents wear and damage to shaft.

**Model No.**  
**SEA AK46080**

## 18V Cordless Grease Gun

**18V**



- High power, professional, cordless grease gun, developing 8000psi.
- Ideal for in-field lubrication where power and speed are required.
- Suitable for screw-type and standard 400g cartridges, manual or bulk filling.
- Features LCD battery condition indicator, air bleed and heavy-duty aluminium pressure head.
- Supplied with 18V 2Ah lithium-ion battery and mains charger.
- Supplied in storage case.

**Model No.**  
**SEA CPG18V**

# LUBRICATION

## Low Profile Drip Trays

9L 15L or 25L



- Low profile drip trays manufactured from hard-wearing recycled polypropylene.
- Purpose-made for the recovery of oil and fluids, these drip tray can be left under most vehicles due to their low profile design.
- Ideal for use over prolonged periods of time, catching any drips that may occur whilst in storage or in the workshop.
- Model No's SEA DRPL15 and SEA DRPL25 are extra-long in order to cover drips from both engine and gearbox.

Model No.	Capacity	Size (W x D x H)
SEA DRPL09	9L	570 x 390 x 50mm
SEA DRPL15	15L	1000 x 400 x 50mm
SEA DRPL25	25L	1100 x 550 x 50mm

## 4.5L Oil Drain Pan

4.5L



- Suitable for oil or coolant and large enough for single oil change on smaller engines.
- Includes oil pouring lip, hanging hole and back shelf with protruding stub for draining oil filters

Model No.  
SEA DRP00

## 8L Oil/Fluid Drain Pan

8L



- Made from high density polyethylene with UV stabilisers.
- Large enough for single oil change.
- Includes oil pouring lip, hanging hole and back shelf with protruding stub for oil filters.

Model No.  
SEA DRP01

## 200ml Oil & Brake Fluid Inspection Syringe

200ml



- Multipurpose syringe with Viton® seal, ideal for the transfer of oils/fluids to and from vehicle components such as brake master cylinders, oil filter housings, power steering reservoirs, gearboxes and differentials.
- Translucent body allows easy inspection of oils and fluids.
- Fluid Compatibility: AdBlue®, Antifreeze, Brake Fluid, Diesel, Oil, Water.

Model No.  
SEA VS404

## 500ml Oil Suction Syringe Metal Body

500ml



- Painted cast steel tube with T-Bar type plunger.
- Particularly useful for removal of oil from gearboxes and differentials.
- Supplied with 300mm flexible suction hose.

Model No.  
SEA AK46

## 1.5L Oil Inspection Syringe

1.5L



- Multipurpose syringe with Viton® seal, ideal for the transfer of oils/fluids to and from vehicle components such as gearboxes and differentials.
- Translucent body allows easy inspection of contents.
- Fluid Compatibility: AdBlue®, Antifreeze, Brake Fluid, Diesel, Oil, Water.

Model No.  
SEA VS405

## 1L Multipurpose Mini Pump

1L



- Multipurpose pump perfect for topping up difficult to access points on motor vehicles, lawnmowers, chainsaws and other jobs around the workshop and home.
- Capacity: 1L.
- Suitable for all engine oils, transmission fluids, brake fluids and general-purpose cleaners.

Model No.  
SEA TP6804

## 500ml Oil Suction Syringe Composite Body

500ml



- Single action composite bodied suction tube with T-bar type plunger.
- Ideal for use on vehicles and machinery for removing oil from gearboxes and differentials.
- Supplied with 300mm transparent flexible suction hose with Ø10mm bore.

Model No.  
SEA AK47

## 180ml Oil Can



- Metal can with flexible spout for directional control.
- Trigger operated action for high pressure oil spray.
- Capacity: 180ml.

Model No.  
SEA TP04

## 500ml Metal Oil Can with Flexible Spout

500ml



- Metal construction with flexible spout and thumb operation lever action.
- 500ml Capacity.
- Spring loaded pressure release.
- Ideal for lubricating bearings, locks, chains, and other moving parts.

Model No.  
SEA TP05



## Short-Arm Threaded Nut Riveter

- Suitable for rivet nuts in aluminium, steel and stainless steel.
- Short-arms provide effortless functionality and access to restricted spaces.



**Model No.**  
**SEA AK3984**

## Paintless Dent Repair Hand Shield

- Shaped to accept a range of paintless dent repair tools.
- Made from ABS plastic for increased strength and durability.
- Textured base provides a stable grip to vehicle tyres etc.
- Aids in preventing injuries caused during paintless dent repairs.



**Model No.**  
**SEA RE106**

## Paintless Dent Repair Tyre Support

- Designed for use with pushing tools, provides improved stability for wheel arch repairs.
- Reduces risk of damage to tyres and alloy wheels and injury to hands.
- Eyebolt can be adjusted to the required angle for the repair. Will accept up to approximately 35mm ball tip.
- Curved body maximises contact with tyre surface area for maximum support.
- Non-slip backing gives improved grip on the tyre.



**Model No.**  
**SEA RE107**

## Ø160mm Funnel with Flexible Spout & Filter

- Polyethylene funnel resistant to oil, fuel and some acids.
- Removable 2-step flexible spout.
- Ideal for vehicles with smaller diameter unleaded filler necks.
- Fitted with handle and removable brass filter.



**Model No.**  
**SEA F16F**

## 3pc Fixed Spout Funnel Set

- Polyethylene funnel set suitable for many fluids including detergents, pesticides, diesel and petrol.
- Contains Ø75mm, Ø150mm and Ø250mm funnels with hanging tabs.
- Not suitable for acetone, gun wash or thinners.



**Model No.**  
**SEA F98**

## 75L Shot Blaster with Water Trap & Wheels

- Pressurised tank for maximum power.
- Supplied with 2.4m rubber hose, five ceramic nozzles and in-line water trap for moisture-free grit blasting.
- Also includes bayonet air line coupling and airflow regulator.
- Accepts a variety of grits up to 700microns and is suitable for stripping rust and paint from wheels, chassis, panels and other corroded/painted surfaces.



**75L** **92kg**

Operating Pressure	Air Consumption	Inlet Size	Max. Grit Consumption	Max. Fill Weight
60-125psi	6-25cfm	1/4"BSP	180kg/hr	92kg



Model No. SEA SB998.G1

**Model No.**  
**SEA SB998**

Spare Part Model No.	Description
<b>SEA SB998.G1</b>	Ceramic Nozzle Set (2, 2.5, 3, 3.5mm)

## Air Blow Gun with 1/4" BSP Air Inlet

- Die-cast metal body with moulded handle and hanging point.
- Fitted with short type nozzle.
- Maximum Operating Pressure: 110psi.



**Model No.**  
**SEA SA334**

## Reusable Body Filler Mixing Board



- Smooth plastic body filler mixing board can be easily cleaned for multiple uses.
- Mixing area: 170mm x 215mm Max. (approximate).
- Lightweight and strong for continuous use.
- Easy to hold in one hand, whilst mixing and applying.



**Model No.**  
**SEA PA09**

## Square Oil Funnel

- Square design and tapered spout fits into most engine filling holes.
- Manufactured from durable polypropylene material.
- Rectangular aperture (180 x 100 x 145mm) to accommodate up-ended containers.

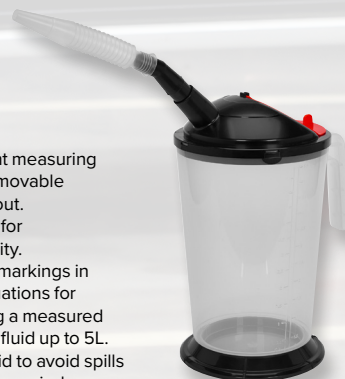


**Model No.**  
**SEA OIL1F**

## 5L Measuring Jug with Flexible Spout

**5L**

- Transparent measuring jug with removable flexible spout.
- Wide base for extra stability.
- Measured markings in 0.5L Graduations for transferring a measured quantity of fluid up to 5L.
- Flip down lid to avoid spills while being carried.
- Recommended for use with oils and other similar viscosity liquids.



**Model No.**  
**SEA VS563**

# AIR POWER TOOLS/POWER TOOL ACCESSORIES

## Medium Stroke Air Hammer Kit

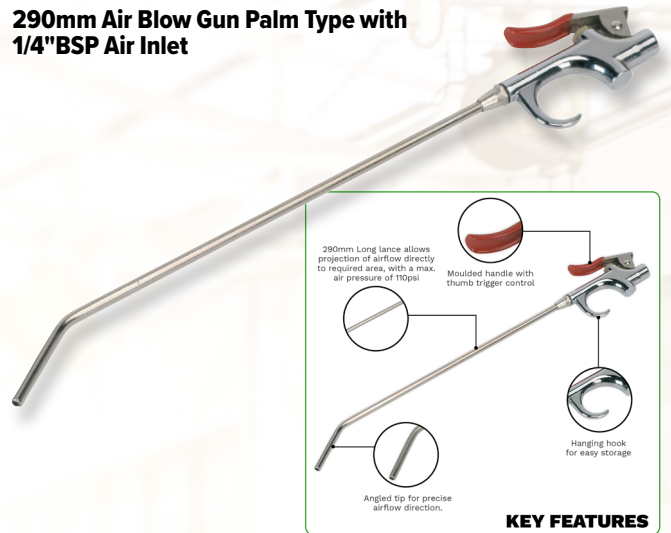
MEDIUM STROKE



- Includes a set of five chisels and a spare chisel retaining spring.
- Chisel Shank Size: .401" Parker Taper.
- Air Inlet Size: 1/4" BSP.
- Air Supply: 90psi - 4cfm.
- Weight: 1.2kg.

Model No.  
**SEA SA12/S**

## 290mm Air Blow Gun Palm Type with 1/4" BSP Air Inlet



KEY FEATURES

- Die-cast metal body with moulded handle and hanging point.
- Palm type gun with thumb trigger control.
- Length of Lance: 290mm.
- Air Inlet Size: 1/4" BSP.
- Maximum Operating Pressure: 110psi.

Model No.  
**SEA SA913L**

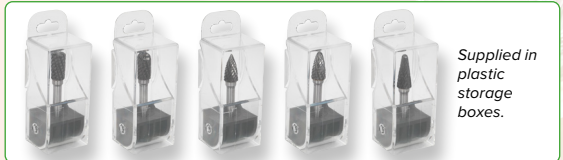
## Ø10mm Cylindrical Tungsten Carbide Rotary Burrs

Ø10mm



- Rotary Burrs made from Tungsten Carbide.
- Cylindrical front end No. 6 cut (universal).
- For use on soft and hard metals, including welded seams.

Model No.	Type
<b>SEA SDB01</b>	Front End Cut
<b>SEA SDB02</b>	Ball Nose
<b>SEA SDB03</b>	Arc Pointed Nose
<b>SEA SDB05</b>	Arc Round Nose
<b>SEA SDB06</b>	Conical Ball Nose



Supplied in plastic storage boxes.

## 4-30mm Double Flute HSS M2 Step Drill Bit

HSS M2

MM



- High-speed HSS M2 double flute step drill.
- Double straight flutes for efficient swarf clearance.
- Allows clog-free precision drilling.
- Hole Sizes: 4-30mm in 2mm increments.
- Supplied in plastic storage case.

Model No.  
**SEA AK4732**

## Ø75 x 2mm Cutting Disc Ø10mm Bore Pack of 5



- General-purpose flat cutting disc recommended for use with Sealey and other leading makes of grinding and cutting power tools.

Model No.  
**SEA PTC/3C5**

# POWER TOOL ACCESSORIES/STORAGE & WORKSTATIONS

## Ø75mm Crimped Wire Cup Brush with Ø6mm Shaft



- Suitable for use with power drills.
- Crimped brass steel filaments add extra rigidity and cleaning power.

**Model No.**  
**SEA SCB75**

## Ø65mm Twist Knot Wire Cup Brush M14 x 2mm



- Suitable for use with power tools up to the maximum rated rpm.
- Twisted steel filaments give more aggressive cleaning action - ideal for heavy rust removal.

**Model No.**  
**SEA TKCB651**

## 10 x 330mm Sanding Belts - Packs of 5



- Aluminium oxide, super-flexible belts for Sealey and other belt sanders.

Model No.	Grit
<b>SEA SA35/B40G</b>	40
<b>SEA SA35/B60G</b>	60

## Headlight Restoration Kit

- 3-Stage headlight restoration kit designed to eliminate the worst cases of headlight degradation, yellowing, oxidation and scratches.
- Includes everything needed to restore the cloudiest lenses.
- Get great results on most plastic lenses, such as tail lights, trailers, boat windows, helmet visors, motorcycle windscreens, snowmobiles and more.
- Improves visibility and safety.
- One kit is intended to restore two headlight lenses.
- Contents: Sanding Discs; P800 (x2), P1200 (x2), P2000 (x2), M10 Male to Female Adaptor, 40g Polishing Paste (x2), 3ml Protection Liquid (x2), 3m x 20mm Masking Tape, Backing Pad M10 Female Thread, Orange Sponge Disc, Cleaning Cloth.



**Model No.**  
**SEA HRK01**

## Magnetic Wristband with 10 Magnets

**Magnetic**



- Wristband contains ten strong magnets to maximise magnetic surface area.
- Size is easily adjustable with the hook-and-loop strap, making this perfect for most adult wrists.
- Take the hassle out of jobs by keeping all your fixings available on your wrist.
- Weighing just 60g this wristband is ideal for prolonged use.
- Easily keep clean by hand washing.

**Model No.**  
**SEA APMWB**

## 9 Drawer Topchest with Ball-Bearing Slides



- Features drop-down carry handles, smooth 25mm ball-bearing drawer slides, cylinder lock and, for additional security, rear locking bars to secure drawers when not in use.
- Supplied with two keys.
- Overall Size (W x D x H): 600 x 260 x 380mm.

**Model No.**  
**SEA AP22509BB**

## 19pc EV/Hybrid Master Tool Kit



- Contents: SEA APPD70, SEA SF300R (x3), SEA SF500R (x3), SEA PPHY, SEA BYSBKIT, SEA HVG1000VL, SEA HVM17K02, SEA TA319, SEA HVSA4, SEA HYBRIDTAG, SEA HYBRIDSIGN, SEA AK83452, SEA AK6124, SEA AK63171, SEA AK7940, SEA STW803, SEA AK7177, SEA AK7178, SEA HRP45.

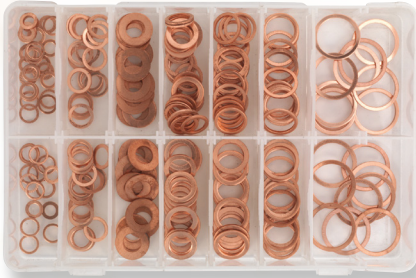


The HVCOM1 is heavy. Extra assistance must be provided at the delivery point to help safe delivery.

**Model No.**  
**SEA HVCOM1**

# CONSUMABLES/MACHINE SHOP

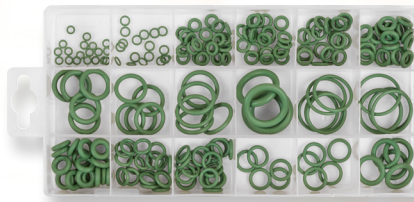
## 250pc Diesel Injector Copper Washer Assortment



- Diesel injector copper washers assortment.
- Contents (Approximate Quantity):  
ID x OD x Thickness; Ø6 x Ø10 x 1 (x20),  
10 x 13.5 x 1 (x20), 10 x 20 x 1 (x20), 12 x 16 x 1.5 (x20),  
14 x 18 x 1.5 (x20), 16 x 20 x 1.5 (x15), 21 x 25 x 1 (x10),  
8 x 11.5 x 1 (x20), 10 x 14 x 1 (x20), 10 x 20 x 2 (x20),  
12 x 18 x 1.5 (x20),  
14 x 20 x 1.5 (x20),  
17 x 21 x 1.5 (x15),  
22 x 27 x 1mm (x10).

**Model No.**  
**SEA AB027CW**

## 225pc Air Conditioning Rubber O-Ring Assortment



- Made from HNBR.
- Designed for use with Freon R134a and R1234YF gas making them suitable for automotive air conditioning units and many other applications.
- Contents: (Approximate Quantity) ID x Thickness;  
Ø3 x 1, 4 x 1, 4.5 x 2, 5 x 2, 6 x 2, 6 x 2.5,  
6 x 3, 7 x 2, 8 x 2mm (20 of each),  
9 x 2, 10 x 2, 12 x 3, 13 x 3,  
14 x 2.5, 17 x 2.5, 18 x 4,  
20 x 2, 22 x 2mm (5 of each).

**Model No.**  
**SEA AC0R225**

## 88pc Bonded Seals Assortment



- Bonded seals (Dowty Seals) assortment.
- Contents (Approximate Quantity):  
M18 (x8), M20 (x5),  
M22 (x5), M24 (x5),  
M10 (x20), M12 (x15),  
M14 (x15), M16 (x15).

**Model No.**  
**SEA AB010DS**

## 419pc Rubber O-Ring Assortment



- Manufactured from Buna-N.
- Suitable for personal and professional workshops, garages and plumbing.
- Contents: (Approximate Quantity) ID x Thickness;  
Ø18 x 3.5, 20 x 3.5, 22 x 3.5, 23.5 x 3.5, 25 x 3.5,  
26.5 x 3.5, 28 x 3.5, 30 x 3.5, 31 x 3.5, 33 x 3.5,  
34.5 x 3.5, 36 x 3.5, 38 x 3.5, 41 x 3.5, 44 x 3.5,  
47 x 3.5, 50 x 3.5mm (10 of each), 11 x 2.5, 14 x 2.5,  
19 x 2.5, 22 x 2.5mm (13 of each), 10 x 2.5, 13 x 2.5,  
16 x 2.5, 18 x 2.5, 21 x 2.5mm (14 of each),  
5 x 2mm (x18), 3 x 1.5,  
4.4 x 2mm (20 of each),  
7 x 1.5, 10 x 1.5,  
13 x 1.5mm (23 of each).

**Model No.**  
**SEA BOR419**

## 100pc Automotive MINI Blade Fuse Assortment

**MINI**



- Automotive MINI blade type fuse assortment.
- Contents (Approximate Quantity): 2A, 3A, 4A, 5A,  
7.5A, 10A, 15A, 20A, 25A,  
30A (10 of each).

**Model No.**  
**SEA BCF100**

## 120pc Automotive Standard Blade Fuse Assortment

**Standard**



- Contents (Approximate Quantity):  
3A, 5A, 7.5A, 15A, 20A,  
30A (15 of each), 10A (x30).

**Model No.**  
**SEA BCF120**

## Quick Release Positive-Negative Battery Clamps Pair



- Copper-zinc plated steel and brass.
- RoHS Compliant.
- Cable Size: 25mm<sup>2</sup>.
- Post Size (Positive/Negative):  
Ø19mm/Ø17.5mm.
- Blue and red.
- Enables quick release.

**Model No.**  
**SEA BTQK12**

## 19mm x 20mm Black PVC Insulating Tape Pack of 10



- RoHS Compliant insulating tape.
- Thickness: 0.15mm.
- Elongation: 125%.
- Tensile Strength: 22N/100mm.
- Temperature Rating: -18°C to 150°C.
- Self-extinguishing.

**Model No.**  
**SEA ITBLK10**

## Ø56-116mm Universal Stretch CVJ Boot EU

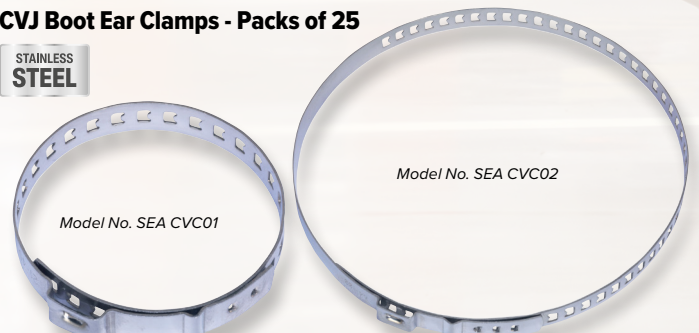


- Universal CVJ boot made from high quality neoprene material suitable for use with air operated boot installation tools.
- Supplied with fitting kit including clips and cutting guide.
- Suitable for most car and car-derived van applications.

**Model No.**  
**SEA CV96EU**

## CVJ Boot Ear Clamps - Packs of 25

**STAINLESS STEEL**



Model No. SEA CVC01

Model No. SEA CVC02

- Stainless steel, single ear, low profile CVJ boot clamps.
- Manufactured to DIN 1.4301.

Model No.	Size
SEA CVC01	Ø19-40mm
SEA CVC02	Ø50-110mm

## Benchtop Drill Bit Sharpener

Ø3-13mm



- No-Load Speed: 4200rpm.
- Fast, simple and effective way to sharpen your drill bits.
- Gives a perfect angle/sharpened head to make drilling with your bit easier.
- Suitable for up to 118° HSS Titanium, Cobalt, Carbon Steel and Split Point bits in range Ø3-13mm.

**Model No.**  
**SEA SMS2008**

## Razor Scraper Blade Pack of 100



- Blades suitable for use with Model No's SEA AK867, SEA AK52504, SEA VS500 and other leading brands of scraper.

**Model No.**  
**SEA AK867B100**

## 3pc Miniature Brush Set



- Composite stocked brush set with hanging holes.
- Steel, nylon and brass filled heads.
- Suitable for cleaning spark plugs and smaller engineering components.

**Model No.**  
**SEA AK9791**

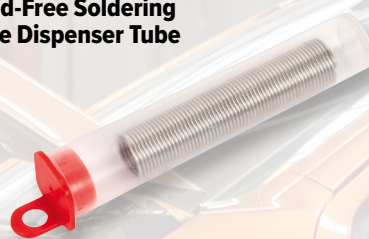
## Windscreen Repair Kit



- Simple step-by-step process and a 30 minute curing time.
- Tough resin formula fills chips and cracks to prevent the damage from spreading.
- Suitable for screen chips up to Ø25mm diameter and cracks up to 300mm long.
- Improves visibility and safety.
- Contents: Push Pin, Clean Cloth, Adhesive Seal (x3), Black O-Ring (x2), Pedestal, Razor Blade, Repair Resin, Injector, Curing Film (x5).

**Model No.**  
**SEA SCS901**

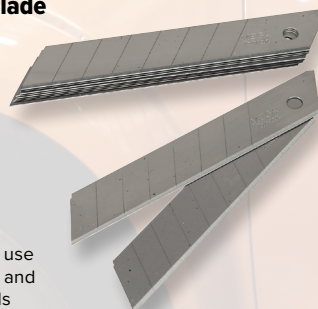
## Lead-Free Soldering Wire Dispenser Tube



- Tube of flux-cored lead-free wire for general-purpose soldering.
- Size: 10g.

**Model No.**  
**SEA SW20**

## Snap-Off Blade Pack of 10



- Suitable for use with Sealey and other brands of retractable snap-off knives.
- Compatible with Model No. SEA AK86R.

**Model No.**  
**SEA AK86R/B**

## Brassed Steel Wire Brush



- Brass steel filaments.
- Curved, folded, alloy stock with composite handle.

**Model No.**  
**SEA WB05/R**

## 25kg Shot Blasting Grit - Bag



- Suitable for workshop, handheld and recirculating shot blasters.
- Complies with COSHH SI-1657-1988.
- Not suitable for use in shot blasting cabinets.

**Model No.**  
**SEA B/25KG**

## 3pc Miniature Wire Brush Set



- Composite stocked brush set with contoured soft grip handles and hanging holes.
- Stainless steel, nylon and brass filled heads suitable for cleaning spark plugs and smaller engineering components.

**Model No.**  
**SEA WB100**

## 3pc Auto Engineer's Wire Brush Set



- Composite handles with hanging holes.
- Small and medium (35 and 90mm headed) brass filled brushes, for components such as glow/spark plugs and contacts, and a large steel filled brush (90mm head) for removal of rust and welding slag.

**Model No.**  
**SEA AK9801**

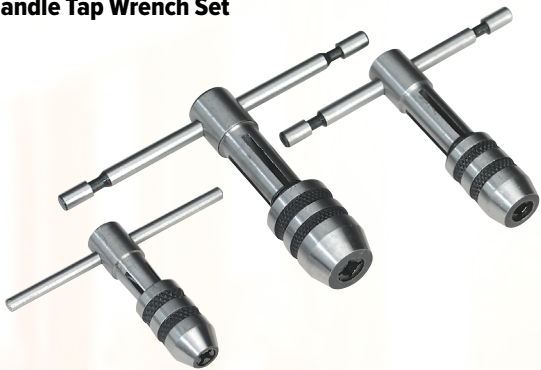
## 36pc 8mm Letter & Number Punch Set



- 66mm Long, high carbon steel punches.
- Hardened, tempered and chemically blackened.
- Full set of alpha-numeric characters including the ampersand symbol (number 6 doubles as number 9).
- 8mm Character height.

**Model No.**  
**SEA AK8297**

## 3pc T-Handle Tap Wrench Set



- General-purpose tap wrenches for tapping and reaming.
- Solid jaw design and heavy knurled cap.
- Maximum Square Size; Small Wrench - 3.9mm, Medium Wrench - 5mm, Large Wrench - 7mm.
- Supplied in pouch.

**Model No.**  
**SEA AK9799**

## 20pc Screw Pitch Gauge Set - Metric



- Folding 20 blade set, individually stamped with accurate thread profiles.
- Range: 0.4-6mm.

**Model No.**  
**SEA AK71SPG**

## 150mm(6") Vernier Caliper

**MM & IMP** **STAINLESS STEEL**



- Traditional pattern stainless steel vernier caliper with exterior/interior measurement and depth gauge.
- Accurate to 0.02mm or 1/1000".
- Supplied in storage case.

**Model No.**  
**SEA AK962**

## 3pc Micrometer Set

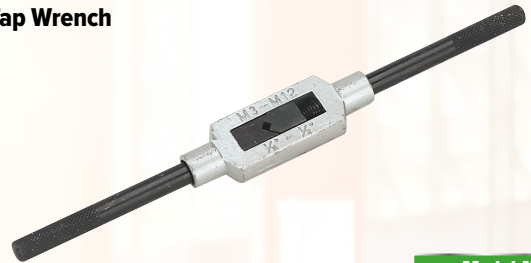
**MM**



- Set includes three external micrometers ranging from 0-75mm.
- Supplied with extension sets and adjusting wrench.

**Model No.**  
**SEA AK9651M**

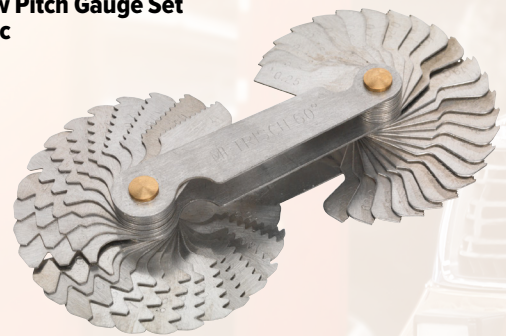
## 200mm Tap Wrench



- Professional style steel tap wrench with sliding jaws.
- Suitable for tap sizes between M3 and M12.

**Model No.**  
**SEA AK727**

## 52pc Screw Pitch Gauge Set BSW/Metric



- Folding 52 blade set, individually stamped with accurate thread profiles.
- Range: 4-62 BSW/0.25-6mm.

**Model No.**  
**SEA AK73SPG**

## 0-150mm(0-6") Digital Vernier Caliper

**MM & IMP**

**STAINLESS STEEL**

**CLASSICS**  
MONTHLY  
**TEST WINNER**  
★★★★★

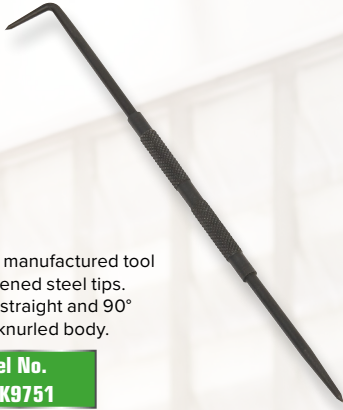
**ClassicFord**  
**BEST BUY**



- 11mm LCD display.
- Hardened and tempered stainless steel with satin finish.
- Metric and Imperial readings with conversion between the two.
- Zero setting control for comparative measurement.
- Supplied in storage case.

**Model No.**  
**SEA AK962EV**

**190mm Double End Engineer's Scriber**



- Precision manufactured tool with hardened steel tips.
- Features straight and 90° tips with knurled body.

**Model No.**  
**SEA AK9751**

**Dial Gauge Indicator 10mm Travel**

MM



- Precision mechanism with Ø58mm dial and locking, rotating bezel.
- Interchangeable foot.
- Fitted with mounting lug.

**Model No.**  
**SEA AK961M**

**Adjustable Arm Safety Spectacles**



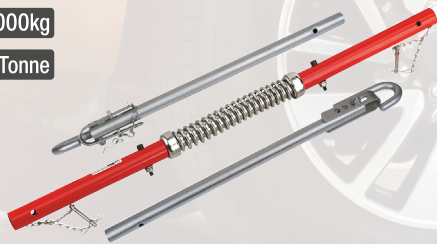
- BS EN 166/F - Wraparound, clear, anti-scratch, polycarbonate lens.
- Adjustable length nylon arms for a snug fit.

**Model No.**  
**SEA SSP44**

**Tow Pole with Shock Spring 2000kg Rolling Load Capacity**

2000kg

2 Tonne



- 2000Kg rolling capacity tow bar ideal for the safe secure towing of motor vehicles.
- Connects to car towing eyes with secure attachment hooks.
- Tow pole has a damping spring to mitigate shock from acceleration or braking.
- Pole easily adjusted to match the towing eye orientation of both towed and towing vehicle.
- Breaks down for easy storage and is supplied with storage bag.

**Model No.**  
**SEA TPK2522**

**154mm Carbide Tipped Scriber**



- Fitted with pocket-clip.
- Suitable for use on glass, metals and ceramics.
- Ideal for machinists, welders, tinsmiths and hobbyists.

**Model No.**  
**SEA AK9752**

**Safety Goggles with Detachable Face Shield**



- BS EN 166 BT 3 - Manufactured from polycarbonate for superior durability and resistance.
- Offers full face protection with an increased range of mobility compared to a standard face protector.
- Curved face shield conforms to the shape of the face offering improved protection.
- Detachable indirect vented goggles to allow for extra versatility.
- Features a wide-angle curved lens for enhanced visibility.
- Adjustable headband with soft PVC frame provides added comfort.

**Model No.**  
**SEA SSP76**

**12"(300mm) Broom Soft Bristle**

12"



- Fitted with handle support bracket.
- Ideal for indoor or outdoor use.

**Model No.**  
**SEA BM12S**

**Heavy-Duty Fine Adjustment Magnetic Stand without Indicator**

**HEAVY DUTY**



- Precision ground base with rotary magnetic control.
- Articulated arm with rotary lock.
- Combination dial and scribing clamp with fine adjustment control.

**Model No.**  
**SEA AK960**

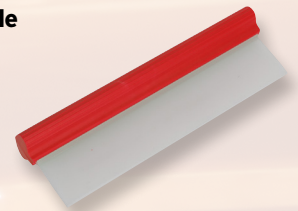
**585mm Shot Blasting Gauntlets - Pair**



- Protection for hands, wrists and forearms.
- Suitable for all types of shot/grit blasters.

**Model No.**  
**SEA SSP41**

**Aqua Flexi-Blade**



- Cuts drying time in half.
- Removes excess water prior to chamouising.
- Blade Length: 300mm.

**Model No.**  
**SEA CC65**

**24"(600mm) Rubber Floor Squeegee with Aluminium Handle**

24"



- Heavy-duty 1220mm aluminium handle and galvanized steel frame with 24"(600mm) rubber blade.
- Suitable for oil, water and other liquid spills.
- Can be used inside or outside.

**Model No.**  
**SEA BM24RSM**

## 1000kg Air Operated Coil Spring Compressor

- Fast and safe compression of road springs.
- 1000kg Air operated unit with safety locking guard.
- Supplied with two interchangeable plastic coated lower yokes and a suspension strut clamp.
- Fits a wide range of spring configurations and diameters.
- Also features a strut locating platform for easy movement of the suspension strut to avoid unnecessary lifting.

1000kg

AIR Operated



Model No.  
SEA RE300

Specifications and descriptions on this promotion are given in good faith but may change without notice and do not form any part of a sale contract. E & OE.

\*Please refer to warranty rules of Intercars for more information on guarantees. TRX-STAR, TRX-TS and TRX-P tools are suitable for driving TORX® and TORX PLUS® fasteners respectively. TORX® and TORX PLUS® are registered trademarks of Acument Intellectual Properties, LLC.